



**The
Weald**

**COMMUNITY SCHOOL
AND SIXTH FORM**



Sixth Form Prospectus 2026 Entry

Contents



Welcome to The Weald Sixth Form



The Sixth Form team



Reasons to study at The Weald



The Weald Sixth Form is unique because...



Student support



Studying at The Weald



Courses available at The Weald



**Meet a selection
of our students**



**Develop your
wider skills**



**Super-Curricular
programme**



Early Entry students



**A stepping stone
to the future**



The future you



How to join us



Welcome to The Weald Sixth Form

Choosing where to study post-16 is a big decision and it's really important to get it right. We all know that we are only able to reach our true potential when we work in an environment where we feel happy, comfortable and fulfilled.

The Weald Sixth Form is a really special place to study because our ethos is focused around the belief that every student is unique and matters as an individual. All students who study here are a valued member of our community and deserve to succeed through engaging with the opportunities on offer.

We pride ourselves on getting to know our students well and finding out what each individual excels at and what they find more challenging. In this atmosphere

our students are able to flourish both in their academic studies and their wider involvement in the school community.

As we are a college within a larger 11-18 school, our Sixth Form students benefit from being part of a larger institution in terms of the wide range of resources we offer, whilst belonging to a smaller group within the Sixth Form itself.

Our students make great academic progress and we are one of the highest achieving Sixth Forms in the area. These fantastic results are achieved because of the excellent learning and teaching that takes place across the Sixth Form and also because we know our students really well. Consequently, our students are able to go on and realise their ambitions beyond the Sixth Form.

We are proud of the fact that many of our students progress to study at the most respected universities and on the most competitive courses. Many students also take up exciting opportunities on fiercely competitive apprenticeship programmes.

Of course, Sixth Form is not just about academic study. We are here to help everyone develop personal skills too, such as independence, resilience and teamwork, and you will find out more about how we do this in the following pages.

We hope you will want to find out more about The Weald Sixth Form and we are happy for you to visit us at any point in the year. We look forward to welcoming you to our Sixth Form!

[← BACK TO CONTENTS](#)

The Sixth Form team

Our team of Sixth Form Tutors, Sixth Form Managers and a Progress Coach, provides support, guidance and help for every student. Students see their Form Tutors regularly, in small groups or on a one-to-one basis, so they are very well placed to help with any academic or pastoral concerns or queries. They also provide individual support for students in making decisions for their next steps after Sixth Form.



Graham Cook

Head of Sixth Form

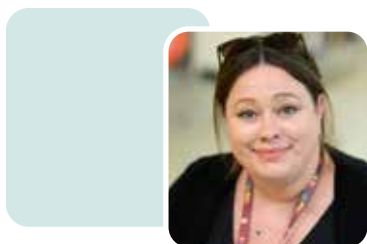
“ Since becoming Head of Sixth Form in 2024, my role has been to have an oversight of the academic progress of all Sixth Form students and to ensure that they have a range of valuable experiences beyond the classroom. I work alongside our expert Subject Teachers and Subject Leaders to ensure that we plan and deliver an interesting curriculum that meets the needs of the students in our community.



Heidi Tucker

Sixth Form Manager (full time)

“ My role is to look after each of the 300+ students in our Sixth Form community, both pastorally and academically. I am on hand to support you through every step of your Sixth Form journey, from settling in to a new environment to guiding and advising you on post Sixth Form Progression routes, as well as everything in between! I will listen and respond, as well as monitor and praise in order to make your time in Sixth Form a positive and successful experience, preparing you for life after The Weald!



Karen Goodwin

Sixth Form Manager (part time)

“ I am based in the Sixth Form Office and I have oversight of the pastoral needs of our cohort of students. I also support with academic progress and liaise with individual students, subject staff and parents. My main priority is to make sure that you are happy and successful whilst you study with us at The Weald. We provide an environment to both learn and grow, and it is wonderful to see our students flourish during their time with us!



Denise Tandy

Sixth Form Progress Coach

“ My role is to support students to enable them to reach their full potential during timetabled Progress Coaching sessions. I support identified students with developing their skills, thus enabling them to achieve the best outcome in their A-Level and BTEC courses and preparing them for independent study. The support offered is flexible so that students can concentrate on different areas such as organisation skills and revision techniques, depending on their individual needs.



Amanda Ridley and Ashleigh White

Sixth Form Administrators

“ As the Sixth Form Administrators, our door is always open and we will often be your first point of contact on a day to day basis. We can help with any queries you may have and point you in the right direction to find the information you need. For new students applying, we co-ordinate and help with all stages of the application process, and for those nearing the end of their studies with us we help with checking UCAS applications before they are sent.

[BACK TO CONTENTS](#)





Reasons to study at The Weald Sixth Form



Fantastic results

The Weald Sixth Form students regularly achieve among the highest results in the area and in 2024, we maintained our high level of top grades. Over 25% of our students achieved AAB or better in facilitating subjects (subjects that would be usually required for them to study at leading universities). Our progress score for disadvantaged students also shows that we are successful against national standards.



Fantastic post-18 progression

In 2024, 97% of those students who progressed on to study at degree level secured their first place offers.

Last year, three of our students progressed to study Medicine at their chosen Universities and one secured a place at Cambridge for English.

In recent years we have seen some outstanding successes in students securing degree level apprenticeships, including at Thales, Schrodgers and Rolls Royce.



Fantastic support

Students have a wide range of support at The Weald Sixth Form, including:

- Form Tutors
- Dedicated Sixth Form Managers
- UCAS advisor
- Learning Mentors
- Access to our school Careers Manager who provides comprehensive support and guidance to students for their post-18 pathways.

We also organise a variety of external speakers and workshops throughout the Sixth Form.

[BACK TO CONTENTS](#)



The Weald Sixth Form is unique because...



Rhys

“ The classes are smaller than at other Sixth Forms, which means teachers can give you more one-on-one support. You get more chance to ask questions, receive feedback, and really understand the subject. It’s a great school with a friendly and focused learning environment.

PREVIOUS SCHOOL: Eastbury Community School

SUBJECTS: Mathematics, Economics and Physics

EXTRA STRAND: EPQ

SUPER-CURRICULAR: Maths Tutoring

FUTURE PLANS: University

Frankie

“ The Weald Sixth Form is unique because of the friendly and encouraging atmosphere that it provides, which I am yet to experience in any other environments. All of the staff and students I’ve encountered have been particularly welcoming and supportive, and this has made the transition of leaving Christs Hospital and joining The Weald all the more stress-free and easy.

PREVIOUS SCHOOL: Christs Hospital

SUBJECTS: Psychology, Film studies, Art

EXTRA STRAND: Core Maths

SUPER-CURRICULAR: Textiles Technician

FUTURE PLANS: A gap year, followed by university and then working in the Film Industry



Will

“ The Weald Sixth Form offers amazing trips like no other. I was able to go to Kenya last summer and help to build classrooms. No other local colleges offer this kind of opportunity and it was such an interesting, rewarding and fun trip! I made good friends with many people out in Kenya that I have stayed in touch with. I had an amazing time and hope to go back one day.

PREVIOUS SCHOOL: The Weald

SUBJECTS: Design, Media, Economics

EXTRA STRAND: Core Maths

FUTURE PLANS: Apprenticeship

Peyton

“ The Weald Sixth Form is unique because it has a very strong sense of community and is amazingly inclusive. I have very easily made friends with people from The Weald even though I have come from a different school.

PREVIOUS SCHOOL: Millais

SUBJECTS: Biology, Physics, Maths

EXTRA STRAND: EPQ

SUPER-CURRICULAR: Supporting KS3 Art Lessons

FUTURE PLANS: I would ultimately like to become a Physiotherapist or to have a job in Sports Rehabilitation.

[BACK TO CONTENTS](#)





Support for our students

We provide a range of strategies throughout the year to make sure that you have every opportunity to succeed. These include:

- Individual mentoring sessions with your Form Tutor
- A personal development programme delivered in a timetabled lesson every fortnight
- Visiting specialist speakers on a range of topics including road safety and awareness, mental health support for young people, UCAS, study skills and subject specific workshops
- After school and lunch-time sessions in subject specific areas for additional study and support
- Progress Coaching - a short term intervention for identified students to develop independent learning skills. It is led by our Sixth Form Learning Mentor who enables students to improve their performance and provides a catalyst for the development of independence, self-awareness and organisational skills.
- One-to-one intervention where needed
- Formal performance reports and parents' evenings as well as regular updates from teachers and the Sixth Form team to support progress
- Pastoral support from a dedicated Sixth Form pastoral team

Facilities

The Sixth Form Centre is used exclusively by Sixth Form students and staff and offers a range of study space options. It houses the main Sixth Form Common Room selling hot food daily.

The Sixth Form Reception and Office lead off the Common Room, meaning the Sixth Form Team are easily found for any questions you may have. The centre also has vending machines selling snacks and drinks.

- Dedicated study spaces
 - a smaller, quieter space for socialising;
 - a separate independent study room;
 - suite of chromebooks for students to use;
 - a silent study room and other quiet study rooms.
- Socialising spaces with games equipment
- Dedicated subject spaces, including:
 - Art and Photography
 - Design Technology
 - Drama Theatre
 - Music
 - Science labs
 - Sport courts and pitches
 - TV and Media Studio
- Dedicated space in the Learning Resource Centre for Sixth Form students



- Adjacent to the site is Billingshurst Leisure Centre, which includes a gym and indoor swimming pool which may be used by Sixth Form students during the school day at a concessionary membership rate.
- Local amenities such as shops and eateries are all within easy walking distance of The Weald Sixth Form.
- A dedicated Sixth Form car park adjacent to the Sixth Form Centre

Post 18 pathways

We care about where our students move onto after their time with us and we know that The Weald Sixth Form will be an important chapter in your journey. We will help you achieve your goal – whether that is in your dream job, studying at a top university or gaining a place on a popular apprenticeship. We offer a range of services to help you to make your next step, such as:

- Careers education
- Intensive support with applications for university, apprenticeships or employment

- Annual Careers Fair with representatives from a wide range of universities and lots of subject specific guidance
- Previous students visit the college to talk about their experience of applying for courses and about life beyond The Weald.

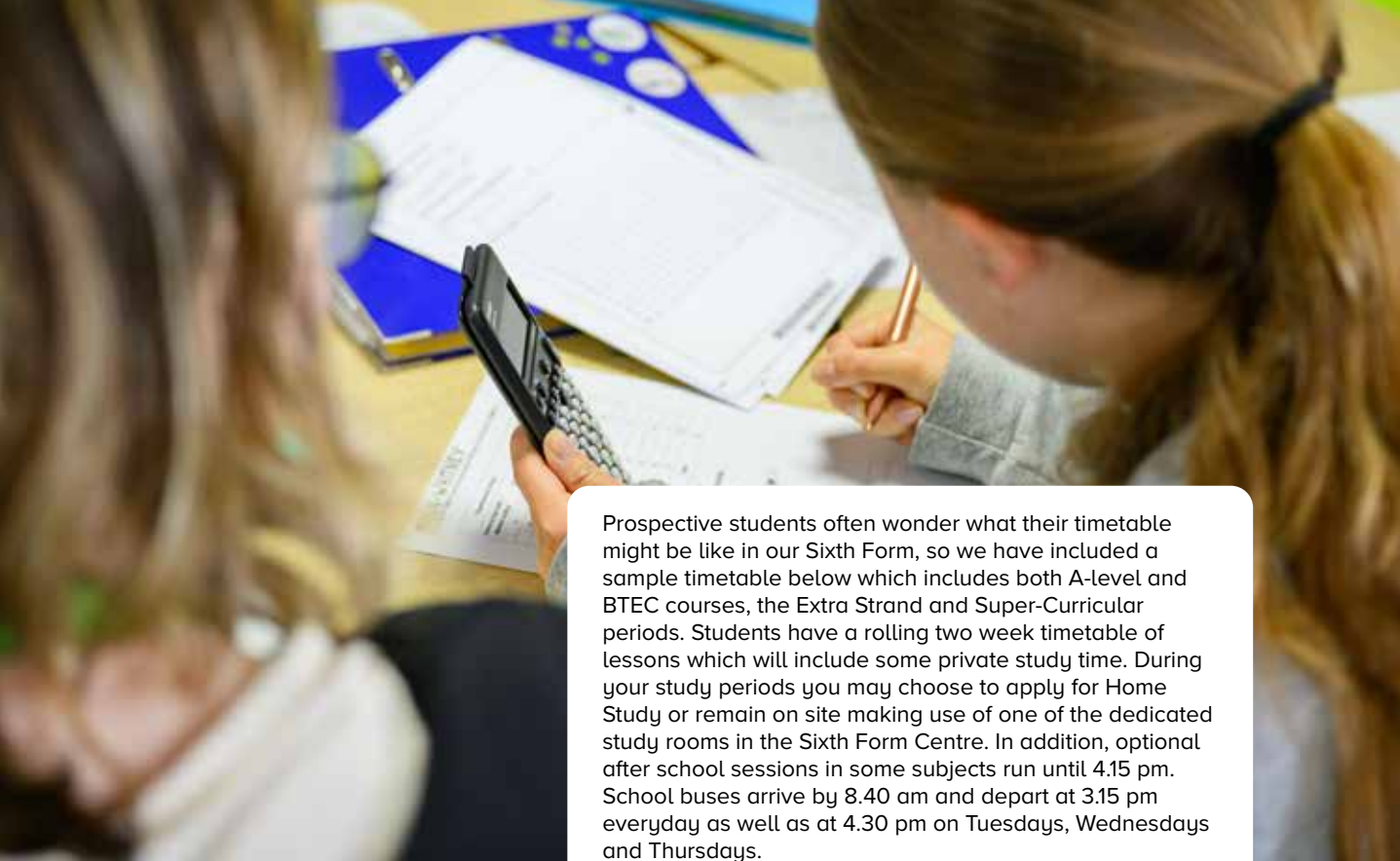
Bursary

Financial concerns should not be a barrier to learning. Young people who need financial support to help them stay in education can apply for either the Education Funding Agency's 16 – 19 Vulnerable Person Bursary Fund or our Discretionary Bursary Fund. Please contact the Sixth Form Office or visit our website for more information. All information provided will be treated in the strictest confidence.



[BACK TO CONTENTS](#)





Prospective students often wonder what their timetable might be like in our Sixth Form, so we have included a sample timetable below which includes both A-level and BTEC courses, the Extra Strand and Super-Curricular periods. Students have a rolling two week timetable of lessons which will include some private study time. During your study periods you may choose to apply for Home Study or remain on site making use of one of the dedicated study rooms in the Sixth Form Centre. In addition, optional after school sessions in some subjects run until 4.15 pm. School buses arrive by 8.40 am and depart at 3.15 pm everyday as well as at 4.30 pm on Tuesdays, Wednesdays and Thursdays.

We offer a wide range of Level 3 A level and BTEC subjects, and will help you to make the right choice of courses for you as an individual. We also offer a Level 2 transition pathway for those students who don't quite meet the requirements to study a Level 3 pathway and need the opportunity to resit Maths and English Language GCSEs. The entry grade requirements for all Level 2 and Level 3 courses can be found in the courses section of the prospectus.

Studying at The Weald

	MONDAY	TUESDAY	WEDNESDAY	THURSDAY	FRIDAY
8.45 - 9.10	ASSEMBLY	TUTORIALS (Y12)	TUTORIALS (Y13)	TUTORIALS	TUTORIALS
PERIOD 1 9.10 - 10.00	SUPER-CURRICULAR	HOME STUDY	SUPERVISED STUDY	HOME STUDY	MEDIA STUDIES
PERIOD 2 10.00 - 10.50			ENGLISH LANGUAGE	ENGLISH LANGUAGE	
	BREAK	BREAK	BREAK	BREAK	BREAK
PERIOD 3 11.10 - 12.00	MEDIA STUDIES	HOME STUDY	HOME STUDY	MUSIC TECHNOLOGY	MUSIC TECHNOLOGY
PERIOD 4 12.00 - 12.50	ENGLISH LANGUAGE			LUNCH	LUNCH
	LUNCH	LUNCH	LUNCH	LUNCH	LUNCH
PERIOD 5 13.25 - 14.15	MUSIC TECHNOLOGY	MEDIA STUDIES	EPQ	SUPERVISED STUDY	ENGLISH LANGUAGE
PERIOD 6 14.15 - 15.05	HOME STUDY		PERSONAL DEVELOPMENT	EPQ	



Weekly assemblies

- Guest speakers
- Topics of interest and relevance to all students
- Student input on content
- Regularly led by students

Tutor time

- Future plans and UCAS support
- First port of call for pastoral and academic support
- Teambuilding
- Notices
- Activities related to life in the Sixth Form
- Fun quizzes

Home Study

- We like all Y12 students to be on site for the first 6 weeks to get to know each other and to build friendships
- After this, all Y12 are entitled to apply for Home Study
- Home Study entitlement is reviewed after each round of data tracking, and is based on Attitude to Learning scores rather than results or progress

Super-Curricular activities

- Develops additional skills
- Supports students in making a positive contribution to their local community
- Can include Peer Mentoring, support in lower school lessons, reading in a local primary school, Radio Weald and many more
- Open University Courses
- A BSL course
- Supporting staff with after school activities



Study periods

- To help students develop independent learning skills and time management, they have 3 periods of dedicated study on their timetable a week. Two of these are registered and supervised in the LRC.
- This provides an ideal opportunity for students to further explore their subjects and depth of understanding beyond the classroom
- We have a variety of dedicated study spaces around the campus where Sixth Formers can study in silence or in groups when they are not in these timetabled Supervised Study periods.

Personal Development

- Students are timetabled into 1 period of RHSE a fortnight, through which they develop the knowledge, skills and attributes they need to keep themselves healthy, safe and prepared for life and work.
- The topics explored will ensure that students continue to learn about issues with real-life relevance to them, at a crucial transition point in their lives.

[BACK TO CONTENTS](#)



Meet a selection of our students



Rosalie

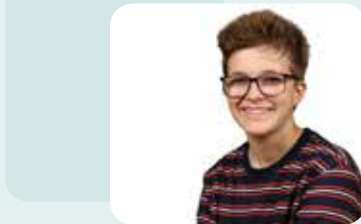
“ Studying here at The Weald Sixth Form has been such a great experience. The subjects are great, and the teachers are really helpful. Studying what I truly am interested in has helped my motivation a lot in school, and having a smaller class size has really allowed me to focus and get direct help from my teachers without feeling unheard. The extra support given to me by the Sixth Form staff has been amazing, and there hasn't been a moment during my time here where I've felt that I've had no options for help, whether it be for schoolwork or mental health. Studying here has been great, and I feel confident and supported throughout every decision I make.

SUBJECTS: English Literature, Film Studies and Criminology

EXTRA STRAND: Use of English

FUTURE PLANS: Go to university for Film or Education

“The feeling of being part of a unique community and knowing that there are always people to help and support when needed is very true of the Sixth Form.”



Aimee

“ I chose to come to The Weald Sixth Form as it was the best environment for me to do my A Levels in. The class sizes are small which allows for more one-to-one learning which is important as there is more content to learn in A Levels, and you get to know people in your classes really well. I really enjoy the freedom The Weald offers. The balance of structure and free time works well, and there is plenty of opportunity to hang out with friends. The support offered by the staff is extremely helpful, where you can talk to them if you are having any issues or problems. Being one of the prefects as well allows me to get more understanding and gain more skills when it comes to charity events, it allows for me to be more involved with the school and working in teams which will help me in the future.

SUBJECTS: RS, Psychology and Criminology

EXTRA STRAND: EPQ

FUTURE PLANS: I am going to take a gap year then apply for an apprenticeship, I am not sure in what yet though



Jack

“ What really appealed to me about The Weald Sixth Form was that I liked the courses offered in the subjects I wanted to study, for example, the Tudor module in History. I also particularly liked the option to complete an EPQ in Year 12 as I knew it would help me develop my writing and research skills in preparation for university. I found the atmosphere in Sixth Form really welcoming when I came to visit and as an external student I have found it really easy to make friends. There are lots of opportunities to get involved and I have taken part in music concerts, volunteered at the primary school for Super- Curricular and am proud to have been elected as a prefect. This summer, I am looking forward to going to Kenya to build classrooms and have been busy raising money for this. The Sixth Form is really supportive and there are lots of options for extra help if I need it. As a dyslexic student I find the smaller classes beneficial and the teachers really helpful.

SUBJECTS: History, Geography, English Literature

EXTRA STRAND: EPQ

FUTURE PLANS: University, possibly to study History or Geography



Your Weald experience

At The Weald Sixth Form, we recognise that your experience is not only about your academic success. Throughout your two years with us there will be ample opportunity to socialise and enjoy yourself. This might be by getting involved with fancy dress days to raise money for charity, travelling to locations such as Iceland, New York, Naples, China or Kenya on vocational trips or attending one of the social events organised by the Sixth Form Prefects.



[BACK TO CONTENTS](#)



Develop your wider skills

Nowadays, it is not enough for students just to have excellent A Level grades when applying for higher education, apprenticeships or employment. Admissions tutors and employers want to see evidence of other skills such as leadership, decision-making and reliability.

At The Weald Sixth Form we pride ourselves in offering a wide range of activities that enable students to develop their potential in these ways. Here are just a few...



Music

The music department offers an exciting and varied range of opportunities for singers and instrumentalists. Sixth Form students are a vital part of all the ensembles, inspiring younger students through their expertise and leadership as well as assisting with the organisation of groups and events. There is a Sixth Form chamber choir which performs at school concerts and other events. Sixth Formers also arrange their own events and clubs. These range from concerts to raise money for charity, to weekly Rock Workshops for younger musicians helping them develop their band skills.

Mentoring

Our long-established Peer Mentoring scheme is an effective way for Sixth Formers to interact with the lower school. After training, volunteer peer mentors are paired with a younger student who may be struggling with friendships, self-esteem, issues at home and so on. The pair will typically meet weekly for a chat or to share in an activity and both parties usually find the scheme hugely beneficial.



In the classroom

Our Sixth Form students frequently volunteer to help a teacher for a particular subject in a lower school class perhaps one period a week. They may work with a small group of students who are struggling or they might develop extension tasks to stretch the more able in the group. This builds confidence, improves communication and requires reliability, organisation and empathy.

Prefects

We have a team of 28 democratically elected prefects including 7 lead prefects. They organise events and activities throughout the year for the benefit of the Sixth Form such as Freshers and Graduation Dinner. They support the rest of the school, for example, by developing and co-ordinating the Christmas Spectacular show, undertaking break time duties, running Student Council, and helping with well-being and equality initiatives. A wide variety of leadership skills are developed by being a part of the Prefect Team.

“I love the opportunities we get to work with younger students - it’s great fun and really rewarding to support them with different aspects of their work.”



Sports

There is a variety of sports clubs to get involved with whilst you're studying at The Weald Sixth Form. You can join our successful rugby club, consider becoming part of our equally competitive football team, or you can make friends outside of your lessons whilst training with the netball team. If you feel there is something missing, the Sixth Form Team is always happy to support students who want to establish a new club or sports team.

Paid Tutoring

Students in Years 12 and 13 have the opportunity to undertake weekly paid tutoring positions for lower school pupils. Arranged by subject areas, these roles not only benefit our younger students academically, but provide Sixth Form students with vital work experience and a chance to be a valued role model within the wider school community.

Enrichment

Enrichment projects at The Weald Sixth Form are equally as popular as sport. As well as the Duke of Edinburgh Award, students can also become part of our Green Power Car Project which regularly races in national and international competitions at Goodwood race track. As part of a year long project, every summer The Weald Sixth Form runs a trip to Kenya. The purpose of the trip is to primarily support education in Kenya by building new classrooms for local schools, but our students also have a life-changing experience by being exposed to new cultures and challenges. The trip typically lasts for three weeks with 30-40 students taking part.

We also give every Year 12 student the opportunity to undertake a week of work experience. Through all of these Super-Curricular opportunities our aim is to develop important character traits such as collaboration, resilience, responsibility and engagement. We believe that Sixth Form should be about so much more than academic study alone.



[BACK TO CONTENTS](#)





Our Super-Curricular programme

As well as their academic studies, students in The Weald Sixth Form take part in a wide range of Super-Curricular activities. This often involves supporting younger students in their studies and in other areas such as sporting activities and organisational skills. We have a flourishing tutoring system in the school whereby many Sixth Form students tutor younger students in specific subject areas. The fact that our students want to make these wider contributions to the school community demonstrates the values that have been built up in our school and Sixth Form community. The skills developed through this Super-Curricular programme have been invaluable to many students as they have moved into Higher Education or training.



Eli

“ Super-Curricular has helped me in a number of ways. I helped out at Code Club after school which not only gave me more chances to practice my coding but also allowed me to share my passion and understanding with younger students and help them prepare for the following years if they chose to continue with Computer Science.

SUPER-CURRICULAR ACTIVITY:
Code Club and DnD Club



Sophie

“ Working with the lower school in their Science lessons has honestly been something that I look forward to every Monday morning. Helping them to grow their confidence and sense of achievement has been so rewarding to watch. I loved Super-Curricular, I would 100% do it again.

SUPER-CURRICULAR ACTIVITY:
Classroom assistant for Year 8 Science



Lily

“ I really enjoyed my Super-Curricular. I chose to complete two Open University courses which I was interested in learning about. I was able to explore a subject in depth outside of my regular curriculum, expand my knowledge and explore potential career paths.

SUPER-CURRICULAR ACTIVITY: Open University Courses



Jack

“ I have really enjoyed helping out with Y8 PE as part of my Super-Curricular activity as it's been a great opportunity to work with some of the younger students in helping them build their confidence and interest in sport. It's also helped develop my leadership and communication skills which will be useful as I go forwards in life.

SUPER-CURRICULAR ACTIVITY:
Helping out with KS3 PE

[BACK TO CONTENTS](#)



Early entry students



Tamsin Day Widening Participation Leader

At The Weald we recognise that some of our students will have the highest aspirations and may wish to apply to Oxford or Cambridge universities. I provide support for those students to give them the best possible chance of success. Among other things, this includes one-to-one advice on preparing for the application process, organisation of practice interviews and support with writing personal statements. A key part of my role is supporting students from under-represented groups in entering.



Frances Elston MedSoc Leader

MedSoc provides students hoping to study Medicine, Dentistry and Veterinary Science with support and guidance. Structured sessions provide insight into topics such as medical ethics, different course styles and the expectations of a career in medicine. Entry into these degree courses is highly competitive, requiring additional preparation for interviews and entrance exams as well as needing a superb application, and support is also given therefore on an individual basis. Mentoring sessions with students who have already been successful in gaining a place at university have also proved invaluable. Students in MedSoc are motivated to succeed as they are applying for entry into a career, not only a degree.

We are delighted that a third of our Early Entry applicants were successful in their applications to either study at Oxbridge, or on highly competitive medicine courses this year.



Max

The Early Entry support at The Weald was very helpful in my application to Oxford for Law with German Law. I was allocated a teacher as a mentor and the Sixth Form also organises mock interviews for Oxbridge which helped ease my nerves and prepared me for my actual interviews at Oxford.

Annabel

As a prospective Medical student, I received a lot of support through my A Levels and application process. The MedSoc was a massive source of advice and answered all of my questions and concerns. Having the year above to tell me about their experiences was extremely useful and the teachers at The Weald are also very supportive, helping me through my interviews, application and tests. I was able to have multiple mock interviews both focused on Medicine and Cambridge, which really improved my skills and allowed me to perform well in all of my real university interviews. There is such a wide range of assistance available for prospective Oxbridge and Medicine students, even if you aren't sure of what you want to do in future, you have the opportunity to explore it at The Weald.



James

The Weald have supported me throughout my application for Mathematics. The weekly sessions with Dr Brinklow for preparing for the STEP exams have been particularly helpful. The staff here are experienced with Oxbridge personal statements and are always happy to lend a helping hand. The mock interviews were invaluable, as well as, the constant information about outreach programs you can join to help you prepare for your application.





[BACK TO CONTENTS](#) 

A stepping stone to the future



We offer a range of careers services to help you make your next steps, such as:

- Comprehensive careers programme aligned to the Gatsby Benchmarks of good careers guidance and Career Development Institute (CDI) learning aims
- Careers manager with a dedicated office, careers library, and access to a qualified careers adviser
- Free account on Unifrog, a complete destinations platform for researching career options
- Opportunities to gain work experience within the School and local community
- Annual careers fair with representatives from a wide range of further and higher education, apprenticeships, and employment destinations
- Intensive support with applications for university, apprenticeships, and employment
- Additional programmes for competitive university applications (Oxford, Cambridge, medicine, veterinary sciences, and dentistry)
- Alumni talks to find out about options and life beyond The Weald Sixth Form



[← BACK TO CONTENTS](#)

The future you



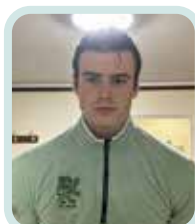
Emily

“I left The Weald after spending much of my college years isolated due to lockdown and having Cystic Fibrosis. So going to uni felt like an even bigger step than usual! I went to Exeter to study BA English. Fast forward 4 years, I am completing my Masters in Publishing in Exeter, after achieving a First Class degree in my undergrad! I am actively engaged in sustainability within both the publishing and fashion industry, I am Co-President of Be The Change, Exeter’s sustainability society, work for the University’s Sustainability Team and local indie publisher David And Charles - it’s a lot! My interest in environmentalism started in secondary school, and flourished at The Weald when I studied Geography and wrote a climate-focused EPQ about single-use plastic.”



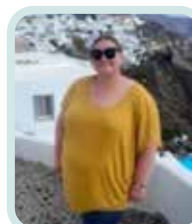
Niall

“After leaving The Weald Sixth Form I went to the University of Nottingham where I studied a Law degree for three years. This involved studying many different areas of the law including criminal, family and contract to name a few. Following university, I explored a number of career paths, including training to become a barrister and also looked into a number of graduate schemes such as the NHS Business Management Scheme and the Police Detective Graduate Programme. Ultimately, I was fortunate enough to secure a place on the Civil Aviation Authority’s Business Management Graduate Scheme where I am able to apply my legal knowledge in a regulatory field and work on exciting future aviation innovation projects. I am thoroughly enjoying this scheme and hope to build a successful career within the CAA.”



Aiden

“I entered Sixth Form not having attained my full potential at GCSE level. The Sixth Form team and staff worked hard to encourage me to realise this during my time with them and I am now reading Economics at Pembroke College, Cambridge. I am currently in my third year of undergraduate study, with two years remaining; one of which I will dedicate to the Mathematics Tripos. The Economics Tripos at Cambridge is renowned for its academic depth and rigor, and my Sixth Form experience provided excellent preparation. Looking ahead, I aim to break into Quantitative Finance, beginning with a summer 2025 internship in New York at Moorgate Capital.”



Grace

“I never had a clear image of what my future would look like, so when entering Sixth Form I decided to choose A Levels I would enjoy. Inspired by Media Studies, I went on to study Journalism at Goldsmiths University of London and joined the university’s newspaper, eventually going on to lead the paper in my second and third year. It was there when I took on the newspaper’s social media where I found a passion that clicked with me.”

After leaving uni, I did some freelance work for local small businesses helping them set up and run their socials, before landing my dream job doing social media for a cruise line. I now have fantastic travel opportunities where I go abroad to work with influencers and capture content, while working under a thriving team that encourages me to grow. Sometimes you don’t know what your dream job is until you discover it!





Courses available

Our curriculum offer

LEVEL 3 PATHWAY

In the Sixth Form, we offer more than 30 subjects at Level 3, including A Levels, BTECs and Cambridge Nationals.

ADVICE ON SELECTING LEVEL 3 SUBJECTS TO STUDY:

- Do you have a specific career path in mind which requires you to study certain subjects?
- Which subjects do you actively enjoy?
- Do you prefer exam based subjects or coursework based ones?
- Do you meet the individual subject entry requirements?

You can choose to follow traditional academic subjects, vocational courses or a combination of both, depending on your interests and ambitions. We will advise you of any specific courses necessary to pursue a particular route beyond the Sixth Form (e.g. Engineering or Medicine).

Most students will study 3 subjects at A Level/Level 3. However, those students who achieve mostly grade 8/9s or equivalent may wish to take 4 A Levels.

Students taking three Level 3 subjects will complete an Additional Strand - Use of English, Core Maths or EPQ (Extended Project Qualification). This additional strand is designed to broaden students' skill sets to support their Level 3 subjects.

We aim to be flexible in our approach; some students choose to incorporate work experience and voluntary service as part of their study – especially when it leads to a chosen career such as Medicine, Law or Leisure Management.

The GCSE requirements for Level 3 study are:

- 6 GCSEs at Grade 4 or above (including at least one of Maths or English).

OR

- 5 GCSEs with an average point score of 4.5 (including at least one of Maths or English).

OUR LEVEL 2 TRANSITION PATHWAY

This pathway will be considered for students who achieve an Average GCSE point score of 3 or more across a minimum of 5 subjects, and also for those who need to resit both Maths and English Language GCSE.

- The subjects studied on this pathway are Business (Level 2 Cambridge Technical Certificate)
- Travel and Tourism (Pearson BTEC Level 1/Level 2 Tech Award)
- Maths and/or English Language GCSE resit

Maths and/or English Language GCSE resit If completed successfully, this pathway could provide the opportunity for students to progress to a standard 2 year Level 3 program of study, subject to both the general and subject specific entry requirements. Our Level 2 courses are the same qualification level and/or difficulty level as GCSEs, and Further Education providers may welcome them in lieu of GCSEs.

Assessment

It is essential that students take assessments regularly and that they receive detailed feedback to help them get ready for the exams they will ultimately sit at the end of their courses. Therefore, teachers make regular assessments, and students and parents will both receive regular feedback on progress.

We send three formal tracking reports during the academic year to provide information about student progress.

In addition to taking regular assessments in class, Year 12 students will sit Year 13 Entrance Exams in April/May. These exams will be set by subject teachers and will be based on A Level papers and the results will be used to judge a student's suitability to progress into the final year of study. The results of the Year 13 Entrance Exams will provide key information that will be used in a UCAS application and in deciding the predicted grade that will be put on the reference.



LEVEL 3 COURSES	A LEVEL	OTHER	CLICK TO VIEW
Applied Psychology		●	▶
Biology	●		▶
Business	●		▶
Ceramics	●		▶
Chemistry	●		▶
Computer Science	●		▶
Criminology		●	▶
Design and Technology: Product Design	●		▶
Drama and Theatre	●		▶
Economics	●		▶
English Language	●		▶
English Literature	●		▶
Film Studies	●		▶
Fine Art	●		▶
French	●		▶
Further Mathematics	●		▶
Geography	●		▶
German	●		▶
Health and Social Care		●	▶
History	●		▶
Mathematics	●		▶
Media Studies	●		▶
Music	●		▶
Music Technology		●	▶
Photography	●		▶
Physical Education	●		▶
Physics	●		▶
Psychology	●		▶
Religious Studies	●		▶
Sociology	●		▶
Spanish	●		▶
Sport		●	▶
Textiles	●		▶
Travel and Tourism		●	▶
OTHER COURSES	A LEVEL EQUIVALENCY	OTHER	
EPQ (Extended Project Qualification)	½		▶
Personal Development			▶
Core Maths	½		▶
Use of English			▶
LEVEL 2 COURSES	A LEVEL	OTHER	
Business Cambridge Technical		●	▶
Travel and Tourism Level 1/Level 2 Tech Award		●	▶
English Retake GCSE		●	▶
Maths Retake GCSE		●	▶

Level 2 courses have the same qualification level and/or difficulty level as GCSEs, and further education providers may welcome them in lieu of GCSEs. Level 3 courses are equivalent to A Levels. General entry requirements for the Sixth Form are stated in our Admissions Policy.

Applied Psychology

BTEC (National Extended Certificate, equivalent to 1 A level)

WHY CHOOSE APPLIED PSYCHOLOGY?

This course is for those who have a passion for understanding the reasons behind why people behave the way they do. You will cover 4 units: Psychological Approaches and Applications; Conducting Psychological Research; Health Psychology and an Introduction to Psychopathology.

HOW IS THE COURSE TAUGHT AND ASSESSED?

2 units will be internally assessed through coursework and 2 will be externally assessed through an external exam (one in Y12, one in Y13) set by Edexcel.

SPECIFIC ENTRY REQUIREMENTS:

- Grade 4 in GCSE Biology Triple Science or
- Grade 4-4 in GCSE Combined Science



Biology

A Level OCR A

WHY CHOOSE BIOLOGY?


Biology is the study of life. This course will give students a fundamental grounding in many areas of Biology ranging from mammalian anatomy to modern genetics and ecology. The course is designed to help you develop essential scientific skills such as evaluation, application and communication. Students will build practical skills across two years developing a portfolio of work.

HOW IS THE COURSE TAUGHT AND ASSESSED?

2x 135 minute papers and 1x 90 minute paper. There is also a practical skills endorsement which will involve a portfolio of practical work.

SPECIFIC ENTRY REQUIREMENTS:

- Grade 5 in GCSE Maths on the higher paper + Grade 5 in GCSE English Language or English Literature +
 - Grade 6-6 in GCSE Combined Science (grade 5-5 on the higher paper will be considered at the discretion of the subject leader)
- or
- Grade 5 in GCSE Maths on the higher paper +
 - Grade 5 in GCSE English Language or English Literature +
 - Grade 6 in GCSE Biology and a Grade 6 in another Science (grade 5 on the higher paper will be considered by the subject leader)

 *I have developed a greater understanding of what happens within the world. I enjoy every lesson as there is always something new and exciting to learn about. We do a lot of fun and engaging practicals that help to further develop our understanding.* Ella

[BACK TO COURSE GUIDE](#) 

Business

A Level Edexcel

WHY CHOOSE BUSINESS?


Studying Business A - Level will give you an understanding of the many issues faced by businesses in the modern world and encourage you to consider ways to respond to them. Year one of the course covers what a business is, the external factors that influence businesses, and the main functions of a business, including finance, marketing, operations and human resources. Year two considers the strategic management of businesses and how businesses operate in a globalised world. This course does not require you to have studied GCSE Business, but you should have a strong interest in current affairs and the working world. The course does require you to have strong numeracy and literacy skills in order to be successful.

HOW IS THE COURSE TAUGHT AND ASSESSED?

There are four themes studied, with 3 final examinations.

SPECIFIC ENTRY REQUIREMENTS:

- Grade 4 in GCSE Maths (Grade 5 is recommended) +
- Grade 4 in GCSE English Language (Grade 5 is recommended)

 *Business is applicable to the world around us and studying this subject helps to understand why businesses make the decisions they do. The teachers are really helpful and supportive throughout as well.* Fred

Ceramics

A Level Edexcel

WHY CHOOSE CERAMICS?


This practical course will suit anyone who enjoys working in three dimensions and solving problems creatively. The first term involves a wide range of skill building using different ceramic techniques and materials exploring surface and form, leading to innovative and exciting three dimensional outcomes. Students explore a wide range of ceramicists and artists to inform their work and broaden their understanding of the contemporary art world.

HOW IS THE COURSE TAUGHT AND ASSESSED?

After an initial skills based introduction unit, students develop a personal project (supported by an extended essay), which is submitted as coursework (worth 60% of the A Level grade). There is also a practical exam unit (worth 40% of the A Level grade).

SPECIFIC ENTRY REQUIREMENTS:

There are no specific entry requirements. GCSE Art or Ceramics would be an advantage but is not essential.

 *This unique subject explores different ways of developing new artistic skills and creative ideas. I would recommend this to anyone who is looking for a calming subject.* Jessica.



Chemistry

A Level AQA

WHY CHOOSE CHEMISTRY?

A-level Chemistry attempts to answer the big question 'What is the world made of?' and it is the search for this answer that makes this subject so fascinating. From investigating how one substance can be changed drastically into another, to researching a new 'wonder' drug, the opportunities that Chemistry provides are endless.

HOW IS THE COURSE TAUGHT AND ASSESSED?


There are three exams, all two hours long. At least 15% of the marks for A-level Chemistry are based on the practical components. There is no coursework, however your performance during practicals will be assessed.

SPECIFIC ENTRY REQUIREMENTS:

- Grade 5 in GCSE Maths in the higher paper, although a 6 is recommended as there is a significant mathematical demand in the course +
- Grade 6-6 in GCSE Combined Science (a Grade 5-5 on the higher paper will be considered at the discretion of the subject leader)

or

- Grade 5 in GCSE Maths in the higher paper, although a 6 is recommended +
- Grade 6 in GCSE Chemistry and a Grade 6 in another Science (a Grade 5 on the higher paper will be considered by the subject leader)

 *This is an interesting subject that develops practical, mathematical and analytical skills. The passionate teachers will happily go out of their way to help.*

Cleo

Computer Science

A Level AQA

WHY CHOOSE COMPUTER SCIENCE?

This course offers rewarding and challenging possibilities for a wide range of people, regardless of their interests. It will provide you with a foundation of knowledge, problem solving, and logical thinking that will serve as a competitive advantage to you in your career, in whatever field you choose.


HOW IS THE COURSE TAUGHT AND ASSESSED?

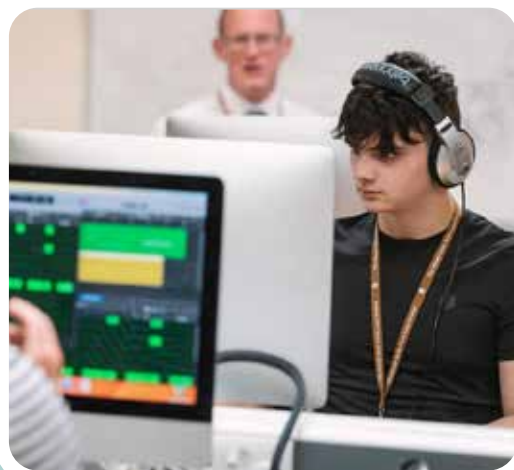
Two 150 minute papers (40% each),
Programming Coursework (20%)

SPECIFIC ENTRY REQUIREMENTS:

- Grade 4 in GCSE English +
- Grade 6 in GCSE Computer Science (a Grade 5 will be considered at the discretion of the subject leader) +
- Grade 6 in GCSE Maths

If you have not completed a GCSE in Computer Science you will be expected to complete Summer Work and take a coding task under timed conditions. This will be at the discretion of the Subject Leader.

 *Both enjoyable and interesting, the computer science course allows the development of problem solving skills and an in depth knowledge about how and why computers work.* James



Criminology

WJEC (Applied Diploma in Criminology)

WHY CHOOSE CRIMINOLOGY?

You will develop a range of subject specific and more generic skills by doing this course. You will be assessed on your ability to apply, analyse and evaluate a broad range of information linked to theories and case studies. You will also develop a range of transferable skills, including report writing, project management, presentation skills and group work. For example, you will plan, design and evaluate your own campaign for change.

HOW IS THE COURSE TAUGHT AND ASSESSED?

This course is not an A level; it is a Level 3 diploma. However, it is equivalent to and graded in the same way as an A level and it carries the same number of UCAS points. It is assessed using a combination of exams and controlled assessments.

Year 1:

- Unit 1 - Changing Awareness of Crime. This unit is assessed by an 8 hour controlled assessment over 3 days. It involves writing a report analysing different types of crime, comparing a range of campaigns for change and planning, designing and evaluating your own campaign for change in response to an unseen brief.
- Unit 2 - Theories of Crime. This unit is assessed by a 1 hour 30 minute exam in May of the first year.

Year 2:

- Unit 3 - Crime Scene to Court Room. This unit is assessed by an 8 hour controlled assessment over 2 days. It involves writing a report in response to an unseen brief.
- Unit 4 - Crime and Punishment. This unit is assessed by a 1 hour 30 minute exam in June of the second year.

SPECIFIC ENTRY REQUIREMENTS:

- Grade 4 in GCSE English Language

Design and Technology: Product Design

A Level OCR

WHY CHOOSE PRODUCT DESIGN?

You will study a range of materials and develop a technical understanding of how products function and how they are made to appropriately support the design and manufacture of your own design solutions. You will learn about wider design principles and the effect of design on users and the world we live in. You will identify market needs and opportunities for new products, initiate and develop design solutions, and make and test prototypes/ products. You will look at how a product can be developed through the stages of prototyping, realisation and commercial manufacture. Finally we hope that you will develop a critical mind through enquiry and problem solving, exploration, creation and evaluation of iterative designs.

HOW IS THE COURSE TAUGHT AND ASSESSED?

Modules of work will include communication and modelling skills, various design and make challenges, 3D computer aided design and manufacture, a product study and a team challenge. Your final NEA coursework task will be a substantial design, make and evaluate project, centred on the iterative processes of explore, create and evaluate. You will identify a design opportunity or problem from a context of your own choice, and create a portfolio of evidence to demonstrate your competence. Assessment is split 50% coursework and 50% Exam.

SPECIFIC ENTRY REQUIREMENTS:

- Grade 5 in GCSE Technology (a grade 6 is recommended)
- Grade 4 in GCSE Maths.



This course has enabled me to consider the balance of functionality and aesthetics in design, and how we can create an idea to function in challenging environments but also have astonishing beauty to keep up with our ever changing environment. Helena



Drama and Theatre

A Level Edexcel

WHY CHOOSE THIS COURSE?

You may be planning a career in performing arts, or you might want to have a 'creative' subject among your A Levels. This exciting, practical course offers you opportunities to act, devise, direct, design and research a range of different plays, theatre styles and practitioners. You'll also see some amazing live theatre. Most lessons are practical workshops or rehearsals in which you develop your skills as an individual, whilst working as part of a lively and supportive group. This course will also enable you to develop vital life skills such as collaboration, time management, resilience and independence.

HOW IS THE COURSE TAUGHT AND ASSESSED?

Component 1: Devised performance - 40% internally assessed

Component 2: Scripted performance - 20% externally assessed

Component 3: Written exam - 40% externally assessed

SPECIFIC ENTRY REQUIREMENTS:

- Grade 5 in GCSE Drama and/or extra-curricular drama involvement +
- Grade 4 in GCSE English Language

“One of the main reasons I chose to take A level Drama and Theatre at The Weald, having not previously studied here, was because the passion from the teachers was palpable. It is reflected in their vigour to try to do what's right for us. I have always loved drama and the idea of immersing yourself into being someone completely different, so you forget about who you are for a second, is great. And while written work here is common, it never feels like a burden due to the way it's taught and only furthers that form of escapism for me. Drama also just draws a community together here even if that's between students or the large family of a production. Community at The Weald is strong but further created and pursued in Drama. Oli



Economics

A Level AQA

WHY CHOOSE ECONOMICS


Do you want to understand how the prices we pay for goods and services are determined? Or how economic policymakers can reduce poverty, improve the nation's health and tackle global issues like climate change? As well as developing an appreciation of fundamental principles of economics, you will also hone your analytical thinking and problem solving skills. The course examines issues such as the economic impact of the war in Ukraine; why, on average, women still earn less than men; and how the government can provide welfare payments to citizens without damaging their incentive to work. Economics A Level is well regarded by universities due to the rigorous thinking skills that students are encouraged to develop. An understanding of economics is useful for anyone considering a career in the public, private or voluntary sectors.

HOW IS THE COURSE TAUGHT AND ASSESSED?

Economics is taught in the context of real world events. Whilst we teach you the relevant theory in lessons, it is essential that you have an interest in current affairs and the willingness to immerse yourself in the subject. Pre-reading and research is expected from all students.

SPECIFIC ENTRY REQUIREMENTS:

- Grade 5 in GCSE Maths (Grade 6 is recommended) and
- Grade 5 in GCSE English Language (Grade 6 is recommended)

 *Economics is a fascinating, engaging and topical subject that really pushes you to think something through from seed to fruit. Studying Economics provides a unique and enjoyable learning experience in which you apply what you learn to real life events.* Henry

English Language

A Level OCR

WHY CHOOSE ENGLISH LANGUAGE?

Everything that we interact with in the world, from our everyday conversations to the media, comes to us through language. How we then make sense of the world is also through language; meaning that the person who truly understands how people use language has great insight into the world and is therefore in a powerful and influential position. Choosing the English Language course allows you to explore a range of spoken and written texts and to engage critically with topical and often controversial issues about how language is used in our world to represent power and gender. You will also develop an appreciation of how our language has changed over time and how we have acquired the ability to communicate from birth.

HOW IS THE COURSE TAUGHT AND ASSESSED?


Two 2 hour and 30 minute exams, each worth 40%.

Coursework (worth 20%) in which students conduct a linguistic investigation into an area of interest.

The course is taught through a mix of directed lessons, small-group work, discussion and student-led presentations..

SPECIFIC ENTRY REQUIREMENTS:

- Grade 5 in GCSE English Language (Grade 6 recommended)

 *It has been fascinating to research further into the English Language by studying topics such as Gender, Child Language Acquisition and Power since our findings can be personally relatable. Our teachers are passionate and highly supportive which forms a positive atmosphere within our lessons, motivating us to develop our skills.* Alicia



English Literature

A Level OCR

WHY CHOOSE ENGLISH LITERATURE?

You will have the opportunity to read, discuss and develop a critical understanding of a wide variety of extraordinary texts from across a broad historical range. These texts touch upon themes and areas of human experience that are universal and timeless. All lovers of literature know that what we read provides us with the thinking tools we need for life. This rich and varied programme of study allows you to develop core skills of analysis, evaluation, independent research and extended writing, as well as an appreciation of the social, cultural and historical contexts that influence literature.

HOW IS THE COURSE TAUGHT AND ASSESSED?

Two 2 hour and 30 minute exams each worth 40%. Coursework, worth 20%.

The course is taught through a mix of directed lessons, small-group work, discussion and student-led presentations

SPECIFIC ENTRY REQUIREMENTS:

- Grade 5 in GCSE English Language (Grade 6 is recommended and
- Grade 5 in GCSE English Literature (Grade 6 is recommended).



The department is so friendly and enthusiastic that it makes you eager to go to lessons. The variety of texts we read has widened my perception of what 'good literature' is to me as I have been introduced to authors I wouldn't have ordinarily engaged with. Hannah

Film Studies

A Level Edexcel

WHY CHOOSE FILM STUDIES

In Film Studies you study Hollywood films from the past and the present, as well as a range of contemporary British films, Global films, silent cinema and documentaries. Through exploration of narrative; representation of characters and ideologies; *misé-en-scène* and significant film theory movements, learners gain a sense of the development of film from its early years to its still emerging digital future. Production work is a crucial area and learners create either a short film or screenplay alongside an evaluation.

HOW IS THE COURSE TAUGHT AND ASSESSED?

Component 1: Varieties of Film and Filmmaking (2 hr 30 exam) - Hollywood cinema, American Independent and Mainstream & British film

Component 2: Global filmmaking perspectives (2 hr 30 exam) - Global film, Documentary, Silent cinema & Experimental cinema.

The course is taught with two teachers with a mixture of screenings, seminar & lecture lessons and group discussion."

SPECIFIC ENTRY REQUIREMENTS:

GCSE Grade 4 in English Language and Grade 4 in English Literature



[BACK TO COURSE GUIDE](#) ▶

Fine Art

A Level Edexcel

WHY CHOOSE ART?

This exciting practical course is ideal for students who want to develop their artistic and creative skills and to broaden their knowledge of contemporary art practice. During the six week induction course, the focus is on developing a range of expressive skills and techniques. The following projects allow students to pursue individual and personal directions within their work in a wide range of materials. This course will suit you if you enjoy exploring the visual world around you, are willing to be experimental and creative in thought and practice.

HOW IS THE COURSE TAUGHT AND ASSESSED?

A personally themed practical unit of work (worth 60%) is supported by an extended essay. Students then complete a practical exam unit (worth 40%).

SPECIFIC ENTRY REQUIREMENTS:

GCSE Art or Ceramics would be an advantage but is not essential. If a student wishes to take this course without Art GCSE, they will need to bring a selection of their work to discuss with the subject leader to see if this course is appropriate for them

 *Fine Art provides greater independence compared to GCSE, allowing a more personal journey to be explored through new advanced techniques.* George

French

A Level AQA

WHY CHOOSE MODERN FOREIGN LANGUAGES?


An A Level language uniquely complements any other subject combination. In our competitive global society, language skills give you a vital advantage over other potential employees and can increase your earning potential by up to 20%. The A Level language courses build upon your GCSE knowledge - your confidence and skills in reading, listening, writing and speaking will rapidly improve and you'll find yourself able to understand the language in real contexts. Your grammar and understanding of how the language 'works' will progress significantly and you will learn how to understand, discuss and respond to a wide variety of interesting topical issues and questions. As your skills grow, so will your love of the language and of the culture and lifestyles of those who speak that language.

HOW IS THE COURSE TAUGHT AND ASSESSED?

You will be assessed with a listening and reading paper, a writing paper and a speaking test. There will be translations both into and out of the target language, and you will study one book and one film

SPECIFIC ENTRY REQUIREMENTS:

- GCSE Grade 6 in French

 *The teachers are lovely and the class is close-knit which creates a really supportive learning environment. The diversity of this subject means that you develop a huge range of transferrable skills from essay writing to researching.* Eve

Further Mathematics

A Level AQA

WHY CHOOSE FURTHER MATHEMATICS?

In Further Mathematics you will learn how to argue and reason mathematically using proofs and formulae. It will provide a challenge and a chance to explore more sophisticated mathematical concepts that will deepen your knowledge and understanding beyond standard A Level Mathematics. In Pure Mathematics you will study topics such as complex numbers, roots of polynomials, matrices, vectors, differential equations, polar coordinates. In Applied Mathematics you will have the opportunity to look into moments, circular motion and either poisson distribution and chi tests, or Graph Theory. Many universities offering Mathematics courses will look for Further Mathematics at A Level.

HOW IS THE COURSE TAUGHT AND ASSESSED?

Students taking Further Mathematics will sit the A level Mathematics in year 1 and Further Mathematics in year 2.

There will be three written exams of 2 hours each at the end of each A level course. The exams have a mixture of question styles, from short, single-mark questions to multi-step problems

SPECIFIC ENTRY REQUIREMENTS:

- Grade 7 in GCSE Maths (Grade 8 is recommended) +
- Grade 4 in GCSE English Language



Geography

A Level Edexcel

WHY CHOOSE GEOGRAPHY?

Geography is a broad based and dynamic academic subject which will open up options for your future. The course will cover both the physical and human environments and the complex interaction of processes that shape our world. It will also, importantly, show the applied side of the subject - how human intervention affects the environment and how people adapt and mitigate the effects of processes on their environment. This is complex and dynamic, and varies from place to place. Employers and universities see Geography as a robust academic subject rich in skills, knowledge and understanding. As a subject linking the arts and the sciences it is highly flexible in terms of what subjects and interests you can combine it with.


HOW IS THE COURSE TAUGHT AND ASSESSED?

You will learn in a wide variety of ways, using maps, data analysis, photos, videos, and podcasts, as well as academic literature. You will be encouraged to use higher level thinking and judgement skills and show your grasp of complex issues through report and essay writing. There are three written exams (80% of final grade) and fieldwork is assessed through Non-Examined Assessment (20% of your final grade).

To get a top grade you will need to read around the subject in newspapers and through magazine and internet articles; TV and radio documentaries are a rich source of current issues too.

SPECIFIC ENTRY REQUIREMENTS:

- Grade 5 in GCSE Geography +
- Grade 4 in GCSE English Language +
- Grade 5 in GCSE Maths

 *This course has helped me to make links in everyday life, such as in the news with global issues. The NEA has allowed me to investigate a particular aspect of geography that interests me the most, and to make connections between the topics throughout.* Lucy

[BACK TO COURSE GUIDE](#) 



German

A Level AQA

WHY CHOOSE MODERN FOREIGN LANGUAGES?

An A Level language uniquely complements any other subject combination. In our competitive global society, language skills give you a vital advantage over other potential employees and can increase your earning potential by up to 20%. The A Level language courses build upon your GCSE knowledge - your confidence and skills in reading, listening, writing and speaking will rapidly improve and you'll find yourself able to understand the language in real contexts. Your grammar and understanding of how the language 'works' will progress significantly and you will learn how to understand, discuss and respond to a wide variety of interesting topical issues and questions. As your skills grow, so will your love of the language and of the culture and lifestyles of those who speak that language.

HOW IS THE COURSE TAUGHT AND ASSESSED?

You will be assessed with a listening and reading paper, a writing test and a speaking test. There will be translations both into and out of the target language, and you will study one book and one film

SPECIFIC ENTRY REQUIREMENTS:

- GCSE Grade 6 in German

“My English has improved and I can see similarities between languages. I find the content interesting as we study many complex social issues. German is a fun challenge and allows you to learn about a new culture”. Andrew



Health and Social Care

OCR Cambridge Advanced National in Health and Social Care - Extended Certificate

WHY CHOOSE HEALTH AND SOCIAL CARE?

You will develop knowledge, understanding and skills that can prepare you for progression to university or apprenticeship in Health and Social Care Management, Social Work, Nursing, Midwifery, Early Years, Occupational Therapy and Paramedic Science. As well as academic studies there is strong emphasis on the application of skills and knowledge. This vocational course attracts UCAS points.

HOW IS THE COURSE TAUGHT AND ASSESSED?

It covers equality, diversity and rights, health and safety, anatomy and physiology, person-centred approaches, mental health, sexual health and nutrition. The qualification is equivalent to one A-level. The coursework element is 60 % and there are two exams that make up 40% of the qualification. One exam will be taken in Y12 and the other in Y13.

SPECIFIC ENTRY REQUIREMENTS:

- GCSE Grade 4 English Language – the coursework demands considerable literacy skills that can support extended writing.

There is no requirement to have studied Health and Social Care previously.

“I love and am absolutely passionate about Health and Social Care. It teaches us skills that are applicable in any environment. It is challenging and demanding and needs dedication. But the end result is the best feeling in the world!” Mapalo

History

A Level AQA

WHY CHOOSE HISTORY?


History is a subject which offers variety, interest and excitement, as well as the chance to more fully understand the complexities of the world around you. The intrigue of the early Tudor period, the turmoil and tragedy of Russia in revolution and the deep political resonance of civil rights in the USA are all full of powerful stories and perspectives.

HOW IS THE COURSE TAUGHT AND ASSESSED?

History is taught in a variety of ways including group work, presentations, use of film and documentary clips, flipped learning, and more traditional lecture-type lessons. There is a strong emphasis on the importance of reading and extended writing. Two of the three units are examination based, with the coursework element being a 3500-4500 word essay worth 20% of the final grade.

SPECIFIC ENTRY REQUIREMENTS:

- Grade 5 in GCSE History +
- Grade 4 in GCSE English Language

 *Studying History A-Level at The Weald is an interesting and enriching experience. It's something I've always had a passion for, and the teachers are incredibly supportive with navigating both the essay and coursework sections of the subject. The variety of topics means there's something for everyone, and so far I've enjoyed it hugely.* Olivia

Mathematics

A Level AQA

WHY CHOOSE MATHEMATICS?

This course will expand your mathematical thinking, understanding and above all, your enjoyment of Mathematics. You will study Pure Mathematics and from here will branch out to use these skills in both Mechanics and Statistics. You will cover many interesting topics such as Algebra and Functions, Trigonometry, Probability, Numerical Measures, Statistical distributions, Vectors and Kinematics.


Most Science, Technology, Engineering and Mathematics courses require A Level Mathematics. In addition to Mathematics being highly regarded by universities and employers, it is a hugely interesting subject with a lot of transferable skills.

HOW IS THE COURSE TAUGHT AND ASSESSED?

Three written exams of 2 hours each at the end of the course. The exams are designed with a mixture of question styles, from short, single-mark questions to multi-step problems

SPECIFIC ENTRY REQUIREMENTS:

- Grade 6 in GCSE Maths (Grade 7 is recommended) +
- Grade 4 in English language.
- Students with a Grade 6 will meet with the Head of Mathematics at the start of the course to discuss support.
- Students will be required to complete summer transition questions in preparation for the start of the course and provide evidence of this work.

 *I enjoy studying Maths because it is a challenging yet rewarding subject that forms the foundations for the sciences and opens the door to more career opportunities.* Ryan

Media Studies

A Level EDUQAS

WHY CHOOSE MEDIA STUDIES?

We live in a media saturated society: we watch the news every morning, we upload photographs on Instagram to show our friends what we are doing, we come home in the evenings and stream movies, play video-games, and listen to music.

In Media Studies, students will interrogate the media more closely, studying a range of set media texts from the past 50 years to today, creating products of their own and evaluating to what extent we create the media and to what extent the media creates us. We will consider media products from a range of perspectives, including the key media conceptual areas (media language, audience, industry and representation) and theoretical perspectives (such as postmodernism, feminism, post-colonialism).


HOW IS THE COURSE TAUGHT AND ASSESSED?

1 x 135 minute exam, 1 x 150 minute exam (combined worth 70% of A Level) and a coursework portfolio (worth 30% of A Level).

The course is taught through a mix of directed lessons, small-group work discussion and student-led presentations.

SPECIFIC ENTRY REQUIREMENTS:

- Grade 4 in GCSE English Language.

 *Media has provided me with a deeper understanding of how the media shapes and constructs our daily lives as well as how representations in the media construct our perceptions of life.* Lily

Music

A Level Eduqas

WHY CHOOSE MUSIC?


No matter what sort of music you enjoy, A Level Music provides an opportunity for committed musicians to develop skills, knowledge and understanding through performing, composing and analysis

HOW IS THE COURSE TAUGHT AND ASSESSED?

Students will take part in regular performances, follow a composition course and study music from a range of styles and genres in a combination of teacher and student-led sessions. Students specialise in either performing or composing, submitting examples of both as part of the A Level. This involves preparing a performance of two or more pieces lasting between six and twelve minutes and composing two or three pieces (one to a brief from the exam board and one to a brief they can write themselves). They also prepare for an exam with questions on set works and other musical extracts.

SPECIFIC ENTRY REQUIREMENTS:

- Grade 6 standard performance by the end of the course.
- GCSE Music is an advantage but not essential.

 *The class is quite small which makes for more focused learning and I have really enjoyed developing my skills in composition as well as learning lots about the development and the history of the symphony.* Will



[BACK TO COURSE GUIDE](#) 

Music Technology

BTEC National Extended Certificate in
Digital Music Production

WHY CHOOSE MUSIC TECHNOLOGY?

If you want to develop your knowledge and understanding of music production in a wide range of scenarios using industry-standard equipment, Music Technology is an excellent choice. You will spend most of your time using the equipment in our Mac suite to record, edit, mix and master your own projects to a near-professional standard.

HOW IS THE COURSE TAUGHT AND ASSESSED?

Music Technology BTEC is taught almost entirely through the hands-on use of equipment. You will learn how to use Digital Audio Workstations and a wide range of hardware found in a recording studio. You will apply your knowledge and skills to assignments based on real-life scenarios from film sound to remixing. The course consists of a series of internally and externally assessed assignments, and there is no final exam.

SPECIFIC ENTRY REQUIREMENTS:

- It is recommended (but not essential) that students are proficient on one or more instruments or voice.
- GCSE Music will be an advantage but is not essential.

I've found it a great experience learning the subject hands on, with great and state of the art equipment, in an atmosphere that is perfect for creativity.

Tom

Photography

A Level Edexcel

WHY CHOOSE PHOTOGRAPHY?

This extremely popular course is suitable for anyone who enjoys exploring the visual world around them. The first term will develop the skills necessary to work in both the darkroom and with digital photography using innovative, experimental and creative techniques. The projects allow students to develop their own personal directions leading to original final outcomes.

HOW IS THE COURSE TAUGHT AND ASSESSED?

Students develop a personally themed practical unit of work (worth 60%) supported by an extended essay. Students then complete a practical exam unit (worth 40%).

SPECIFIC ENTRY REQUIREMENTS :

No previous experience is necessary but an interest in the art world and the creative process is essential. GCSE Art would be an advantage

Photography has really enabled me to express my creativity which the teachers have supported and helped me improve throughout the course. Katie



Physical Education

A Level OCR

WHY CHOOSE PHYSICAL EDUCATION?

Are you:

- Thinking of becoming a physiotherapist?
- Aiming to manage a gym?
- Wanting to become a personal trainer?
- Wanting to influence the diet and exercise habits of the nation?
- Fascinated by the human body?
- Studying other sciences?
- Or do you just want to understand the ‘why’ behind sports performance?

If so, A Level Physical Education is for you.


HOW IS THE COURSE TAUGHT AND ASSESSED?

A Level

- 3 exams totalling 4 hours = 70%
- 1 Practical Activity = 30%

SPECIFIC ENTRY REQUIREMENTS:

- Grade 5 in GCSE Physical Education (Grade 6 is recommended)
- If you have not studied PE at GCSE, you may be accepted onto the course at the discretion of the subject leader.

 *This is a fascinating, engaging and fun course; with a mix of theory, class discussions, hands-on competitive tasks and practical activities to help understanding in the classroom.* Abby



Physics

A Level Edexcel

WHY CHOOSE PHYSICS?

Physics is the fundamental science that lies at the heart of modern engineering, technology and medicine. You will learn a range of topics from the smallest particles known to man to the biggest stars in the universe. In Year 1 you will study mechanics, materials, waves, electricity and light. In Year 2 you will study particle physics, further mechanics, electric and magnetic fields, thermal energy, nuclear decay oscillations and astrophysics.

If you have ever wondered, ‘How does that work?’ – then Physics is for you.”

HOW IS THE COURSE TAUGHT AND ASSESSED?


Two topic-based papers and a final synoptic paper. There is also a practical skills endorsement that is not examined externally.

SPECIFIC ENTRY REQUIREMENTS:

- Grade 5 in GCSE Maths in the higher paper, although a 6 is recommended as there is a significant mathematical demand in the course +
- Grade 6-6 in GCSE Combined Science (a Grade 5-5 on the higher paper will be considered at the discretion of the subject leader)

or

- Grade 5 in GCSE Maths in the higher paper, although a 6 is recommended +
- Grade 6 in GCSE Physics and a Grade 6 in another Science (a Grade 5 on the higher paper will be considered by the subject leader)

 *Waves aren't just X-rays, but also the miniature ridges on the wings of blue butterflies. Materials are about how the devices essential to our daily lives function. There are answers to be had, but infinitely more questions to ask.* Harriet

Psychology

A Level Edexcel

WHY CHOOSE PSYCHOLOGY?

Psychology allows you to use scientific theories and models to explain all aspects of human behaviour. It explores and evaluates opposing views on, for example, the causes of addiction, phobias, mental health issues, crime, memory loss and aggression. Four approaches are used to explain behaviour; social, biological, cognitive and behavioural. Year 13 explores criminology & clinical applications. Research methods are also covered. You'll see the world very differently after two years!

HOW IS THE COURSE TAUGHT AND ASSESSED?

A mixture of flipped learning, independent work and group work. The course is assessed by three written 2 hour examinations, all include short answer questions and essays..

SPECIFIC ENTRY REQUIREMENTS:

- Grade 5-5 in GCSE Combined Science, on the higher tier paper (a Grade 6-6 is recommended) +
- Grade 5 in GCSE Maths

or

- Grade 5 in GCSE Biology and one other Science, both on the higher tier paper (a Grade 6 in both is recommended) +
- Grade 5 in GCSE Maths



The course allows you to get a deeper understanding into human behaviour. It is engaging, enjoyable, and incredibly interesting to learn about events that happened in real life and why they have occurred. Ella

Religious Studies, Philosophy and Ethics

A Level OCR

WHY CHOOSE RELIGIOUS STUDIES?

RS, Philosophy and Ethics encourages and develops skills in critical thinking and analytical writing. We study a balance of secular and religious theories spanning more than two millennia; learning how Greek philosophy and Christianity have shaped our society today, considering whether or not moral actions are intrinsically good or if the end justifies the means, and critically analysing key thinkers within Christianity who have shaped the religion today. Students in previous years have progressed to study English, History and Theology/Philosophy, commenting that the essay writing skills developed in RS have benefited them at university.

HOW IS THE COURSE TAUGHT AND ASSESSED?

The specialists in Theology, Philosophy and Ethics, will encourage independent study, use teacher input and direct students towards wider reading. Assessment consists of 3 exams where knowledge and ability to evaluate are judged. Exam-style questions are used throughout the course.

SPECIFIC ENTRY REQUIREMENTS:

- Grade 5 in GCSE English Language



Studying religious studies has allowed me to think critically and analytically about the world around us and the decisions we make. Issy



Sociology

A Level AQA

WHY CHOOSE SOCIOLOGY?


Sociology explores the relationships between individuals and groups, as well as the structures and cultures that shape our lives. By learning about sociology, we can better understand the complexities of our society, become more aware of our own beliefs and biases, and gain a better understanding of how social systems, organisations, and institutions work. By learning about the different societies around the world, we can gain an appreciation for how our own culture and values influence our behaviour and decisions. We can also gain a better understanding of how our beliefs and values shape the laws and policies of our society

HOW IS THE COURSE TAUGHT AND ASSESSED?

The course is taught through a mix of directed lessons; small group work; discussion and student led presentations. Sociology is heavily literacy based subject. Expect to read, discuss and write about Sociological debates in every lesson. Sociology has it's own language expect to spend learning and quizzing on key terminology. Assessments range from short answer questions (4, 6 marks) to extended essays (20-30 marks) on three final examination papers.

SPECIFIC ENTRY REQUIREMENTS :

- Grade 4 in GCSE English Language

 *We cover issues which might otherwise be hidden in the depth of misconstrued history and hegemonic changes. We learn about issues most prevalent in society but that are stigmatised and shunned. Sociology will change your perspective on life and help you to realise your own privilege.* Josh

Spanish

A Level AQA

WHY CHOOSE MODERN FOREIGN LANGUAGES?


An A Level language uniquely complements any other subject combination. In our competitive global society, language skills give you a vital advantage over other potential employees and can increase your earning potential by up to 20%. The A Level language courses build upon your GCSE knowledge - your confidence and skills in reading, listening, writing and speaking will rapidly improve and you'll find yourself able to understand the language in real contexts. Your grammar and understanding of how the language 'works' will progress significantly and you will learn how to understand, discuss and respond to a wide variety of interesting topical issues and questions. As your skills grow, so will your love of the language and of the culture and lifestyles of those who speak that language.

HOW IS THE COURSE TAUGHT AND ASSESSED?

You will be assessed with a listening and reading paper, a writing paper and a speaking test. There will be translations both into and out of the target language, and you will study one book and one film

SPECIFIC ENTRY REQUIREMENTS:

- Grade 6 in GCSE Spanish

 *Studying 'Volver' in Spanish has encouraged me to watch other foreign language films and learn about other cultures. I can't wait to have the opportunity to travel and use my languages in real life!"*

Sport

BTEC Level 3 Diploma (equivalent to 2 A Levels and taught across 2 subject blocks on the timetable) Edexcel

WHY CHOOSE SPORT?

This qualification will enable you to develop the essential skills and knowledge for starting a career in the sports sector, with a specific focus on sports performance and excellence. The course covers units of work such as 'Anatomy & Physiology', 'Fitness Training & Programming for Sport', 'Skill Acquisition', 'Fitness Testing for Sport & Exercise' and 'Practical Sport.'

HOW IS THE COURSE TAUGHT AND ASSESSED?

One external exam, three externally assessed units and six internally assessed units.

SPECIFIC ENTRY REQUIREMENTS:

- Grade 5 in GCSE PE (a Grade 6 is recommended)
- If you have not studied PE at GCSE you may be accepted onto the course at the discretion of the subject leader.



BTEC Sport has allowed me to develop my knowledge and understanding of physiology and anatomy to go with specified training programmes which I have applied to daily life. I look forward to taking on the leadership roles as I will be learning another skill to help me with my future and my confidence. Eira



Textiles

A Level Edexcel

WHY CHOOSE TEXTILES?

This exciting practical course is ideal for anyone who enjoys experimenting with a wide range of materials to develop creative and artistic skills. You will be taught how to use specialist techniques in a well-equipped department to produce highly individual and expressive pieces of fine art textiles. You will study the work of a range of contemporary textile artists. This course celebrates the colours, structures and textures that are so vital to the tactile nature of textiles. It would be suitable for anyone who enjoys exploring the visual world around them, considering conceptual ideas and then communicating this through the endless possibilities of creative textile work.

HOW IS THE COURSE TAUGHT AND ASSESSED?

Students will begin the course by completing a project introducing a range of practical skills. They will then develop a personally themed unit of work supported by an extended essay which they will submit for their coursework unit worth 60% of the A Level grade. Students then complete a practical exam unit, worth 40% of the A level grade.

SPECIFIC ENTRY REQUIREMENTS:

There are no specific entry requirements. A GCSE in Art or Textiles would be an advantage but is not essential.



Textiles is a great time and space to channel ideas through creativity while being a break from other essay-heavy subjects. It feels like a passion rather than a qualification which is refreshing! Olivia

Travel and Tourism EPQ

Level 3 National Extended Certificate in
Travel and Tourism

WHY CHOOSE TRAVEL AND TOURISM?

The travel and tourism industry is one of the fastest growing industries in the UK. The value of tourism to the UK economy is over £200 billion, and the sector employs around 4 million people, therefore it is an area that offers many opportunities.

This applied learning course will provide an introduction to the travel and tourism sector and support progression to further/higher education or employment.

In addition to its focus on the travel and tourism industry, the course has a strong emphasis on core knowledge and fundamental skills (such as communication and team working) that are transferable across other sectors.

HOW IS THE COURSE TAUGHT AND ASSESSED?

There are three mandatory units:

- the world of travel and tourism
- global destinations
- principles of marketing in travel and tourism

You will also study one of the following optional units:

- visitor attractions
- events, conferences and exhibitions

Assessment is by a portfolio of evidence and examination.

SPECIFIC ENTRY REQUIREMENTS:

- A grade 5 or above in GCSE English language and Maths



Travel and Tourism has allowed me to expand my knowledge of the world and travel industry around me. It has provided a knowledge of how different businesses all work together to function in an efficient manner. Emily

(EXTENDED PROJECT QUALIFICATION -
AN EXTRA STRAND COURSE)

Equivalent to half an A-level Edexcel

WHY CHOOSE EPQ?

The EPQ is an excellent way to develop many of the skills required to be a successful university student. If you want to have an open choice about an area of research and study then the EPQ is definitely for you. You could choose to study an area that you are particularly interested in as part of your A Levels or which is linked to any university course that you are intrigued by. Many universities will lower the offer grades for students who have successfully completed the EPQ and it will certainly give you lots to discuss at any interview.

HOW IS THE COURSE TAUGHT AND ASSESSED?

Students will be instructed in how to conduct and present academic research. They will be assigned an assessor who will oversee their progress in producing a final project and completing a presentation in front of a small audience. In terms of the final project, students can choose between a dissertation, an investigation, a performance or an artefact. The different requirements for each of these will be carefully explained in class before they have to choose.

The course is generally taken, and completed, during Year 12. However, there may be the opportunity for some Year 13 students to complete an EPQ if their university course requires it.

SPECIFIC ENTRY REQUIREMENTS:

- Grade 5 in GCSE English Language or GCSE English Literature.



Being able to choose a topic that I find interesting made it a very enjoyable process and it has greatly improved my essay writing ability and research skills. I would definitely recommend it! Cleo



[BACK TO COURSE GUIDE](#) ▶

Core Maths

Level 3 AQA (AN EXTRA STRAND COURSE
WITH UCAS POINTS)

WHY CHOOSE CORE MATHS?

This course is for anyone who wants to study Mathematics in real world situations and is recommended for students wishing to study subjects at A level and/or degree level with Mathematical content such as Psychology, Biology, Economics, Business Studies, Geography and Computer Science for example. You will learn about Mathematics in Finance as well as how to represent and analyse situations using Mathematics and develop problem solving skills.

HOW IS THE COURSE TAUGHT AND ASSESSED?

Taught over 1 year, there are two written calculator exams of 90 minutes each at the end of the course. The qualification has the same UCAS tariff points as an AS-Level.

SPECIFIC ENTRY REQUIREMENTS:

- Grade 4 in GCSE Maths



Core Maths is an interesting subject where you learn about Maths and the impact it has on the outside world. Core Maths also helps you gain a deeper understanding of material covered in GCSE Maths. Oliver

Use Of English

(AN EXTRA STRAND COURSE)

WHY CHOOSE USE OF ENGLISH?

This is a programme which supports the essential written elements which other courses of study require. Throughout the year students will develop their academic writing skills for transference to other chosen courses and practise writing and presenting appropriately for a range of relevant work-based situations. This is achieved through engagement with a range of topical issues that span social, ethical and thematic ideas. Students will consider what reliable research looks like, finetune their referencing skills and improve the clarity and coherence of their written and verbal communication.

HOW IS THE COURSE TAUGHT?

Lessons include a combination of teacher-led and independent work exploring a range of topical issues. Students have a regular 'work-in progress session' where they are asked to bring extended pieces of writing from their studied courses for critique and development.



Use of English has really helped me with my essay writing in History. My Use of English teacher has been able to combine my knowledge of History with her knowledge of what examiners will be looking for within my essays. This has really improved the clarity and sophistication of my academic writing. Haydn



Personal Development

Personal Development is a compulsory curriculum subject through which pupils develop the knowledge, skills and attributes they need to keep themselves healthy, safe and prepared for life and work. Students will have fortnightly timetabled lessons at key stage 5. Topics explored will ensure students continue to learn about issues with real-life relevance to them, at a crucial transition point in their lives.

Topics explored include:

- Self concept
- Healthy lifestyles including Mental health and emotional wellbeing
- Managing risk and personal safety, including Media literacy and digital resilience
- Sexual health
- Drugs, Alcohol and Tobacco
- Relationship values, Forming and maintaining respectful relationships including consent, contraception and parenthood
- Discrimination and equality including rights and responsibilities.
- Work related learning such as Choices and pathways, Employment rights and responsibilities and financial choices

Level 2 Pathway

At The Weald we offer a Level 2 Pathway for those students who need a bridging course between GCSE and A Level or other post-16 study. This course may be offered to students who have not met the minimum requirements to study A Level courses and who need to retake Maths and/or English GCSE. Our Level 2 pathway is comprised of courses in both Business and Travel & Tourism, along with GCSE resits in Maths and/or English Language.

SPECIFIC ENTRY REQUIREMENTS:

This pathway will be considered for students who achieve an Average GCSE point score of 3 or more across a minimum of 5 subjects, and also for those who need to resit both Maths and English Language GCSE.



Business Cambridge Technical

Cambridge Technical Level 2 Certificate OCR

WHY CHOOSE BUSINESS CAMBRIDGE TECHNICAL?

This exciting course has been designed to prepare you for employment. This programme will give you the opportunity to gain a broad understanding of the working world, and skills that you will need to be successful in the future. The course is the equivalent of a GCSE at Grade 4 and is the ideal platform for progressing to advanced courses or employment.

HOW IS THE COURSE TAUGHT AND ASSESSED?

This one year course consists of three units of study, graded as Pass, Merit or Distinction. All units of study have to be completed at a Pass level to achieve the qualification. There are no exams. It is a 100% coursework subject.

SPECIFIC ENTRY REQUIREMENTS:

This pathway will be considered for students who achieve an Average GCSE point score of 3 or more across a minimum of 5 subjects, and also for those who need to resit both Maths and English Language GCSE.

OTHER INFORMATION:

This course is studied together with a Level 2 course in Travel, and GCSE English and/or GCSE Maths retake as required.



Pearson Travel and Tourism BTEC Level 1/2 technical award

Pearson

This applied learning course will provide an introduction to the travel and tourism sector and support progression to further/higher education or employment.

In addition to its focus on the travel and tourism industry, the course has a strong emphasis on core knowledge and fundamental skills (such as communication and team working) that are transferable across other sectors. The travel and tourism industry is one of the fastest growing industries in the UK. The value of tourism to the UK economy is over £200 billion, and the sector employs around 4 million people, therefore it is an area that offers many opportunities.

This applied learning course will provide an introduction to the travel and tourism sector and support progression to further/higher education or employment.

HOW IS THE COURSE TAUGHT AND ASSESSED?

There are three mandatory components: 1) Travel and tourism organisations and destinations. 2) Influences on global travel and tourism. 3) Customer needs in travel and tourism. Components 1 and 2 are assessed by internal supervised assignment briefs. Component 3 is synoptic and is assessed by and external examination.

SPECIFIC ENTRY REQUIREMENTS

This pathway will be considered for students who achieve an Average GCSE point score of 3 or more across a minimum of 5 subjects, and also for those who need to resit both Maths and English Language GCSE.

OTHER INFORMATION

This course is studied together with a Level 2 course in Business, and GCSE English and/or GCSE Maths retake as required



[BACK TO COURSE GUIDE](#)







Joining us

June 18th 2025 Sixth Form Summer Open Evening. A chance to meet our Students and Sixth Form team and to ask as many questions as you'd like to

September - October 2025 Our staff visit local schools and meet their students in a variety of events, including assemblies and post-16 events

October 23rd 2025 Sixth Form Open Evening

October 2025 Apply online via our website
<https://www.theweald.org.uk/sixthform>

November 2025/March 2026 Sixth Form interviews are held either on site or at local schools

December 19th 2025 Deadline for applications

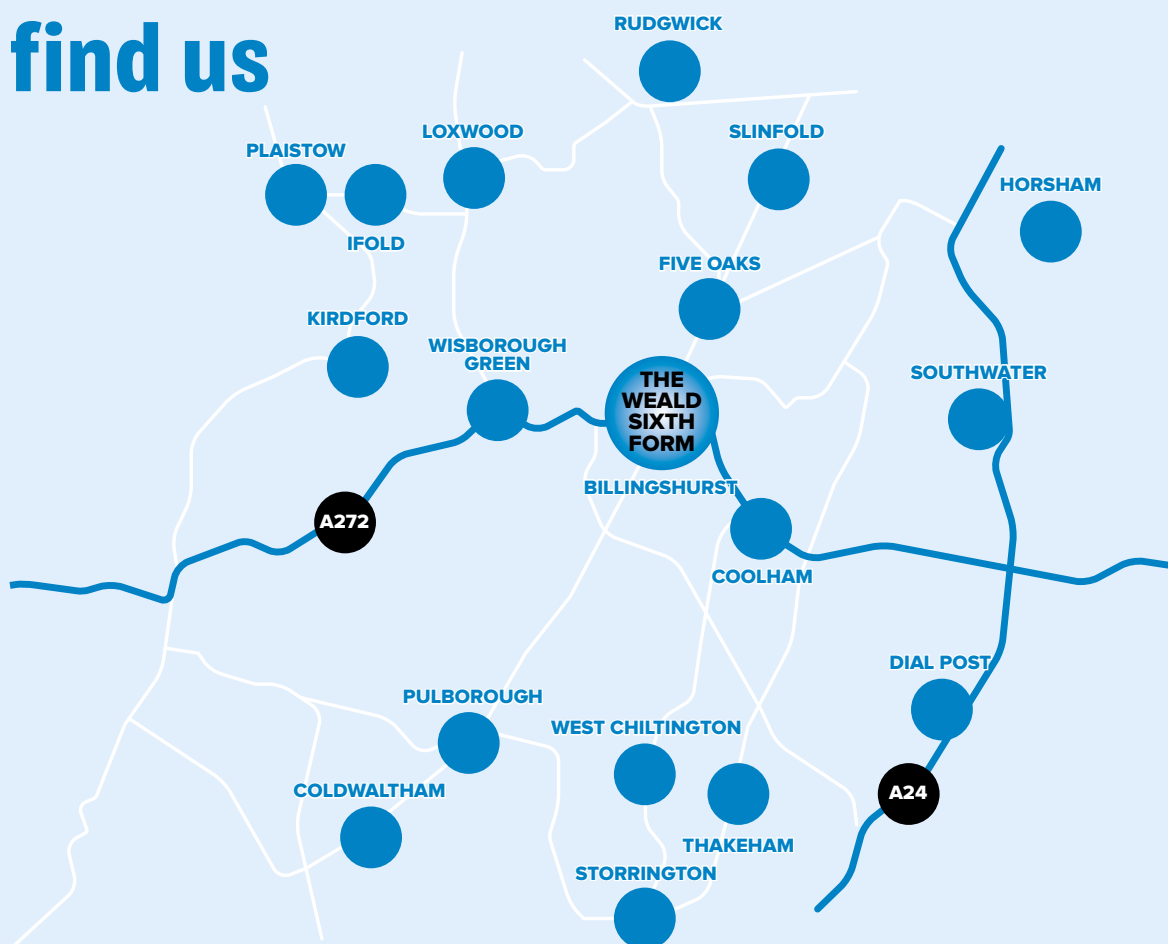
March-June 2026 Taster Days for internal and external students

Early September 2026 Registration and Enrolment

www.theweald.org.uk/sixthform

[BACK TO COURSE GUIDE](#) ►

How to find us



The Weald Sixth Form is easily accessible by public transport.

CAR

Students with cars are given access to the free Sixth Form car park which is used exclusively by our students.

TRAIN

Billingshurst train station, which is located within easy walking distance of The Weald site, has direct train lines to Horsham, Crawley and Chichester.

BUS

Students are able to apply for a concessionary place on the county run school buses via West Sussex County Council. There is also a bus service for Sixth Formers between Horsham (Southwater and Tanbridge) and Billingshurst.

The Weald School
Station Road, Billingshurst,
West Sussex, RH14 9RY

Tel. 01403 787283

Email: sixthformoffice@theweald.org.uk

www.theweald.org.uk/sixthform