

The Weald Sixth Form College

Welcome



Year 12 Parents' information evening

- . Welcome
- . Curriculum offer
- . The Weald Community
- . Sixth Form Lived Experience
- . Structured support
- . Top Tips
- . UCAS
- . Next steps
- . Q+A

Who's who?



Mrs Tucker
6F Manager



Mrs Tandy
Progress Coach



Mrs Ridley
6F Office



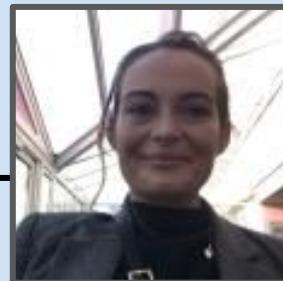
Mr Cook
Head of 6th



Mrs Goodwin
6F Manager



Mrs Love
Progress Coach



Mrs White
6F Office

Curriculum Offer

- A-Levels
- BTEC
- Hybrid
- Level 2 - Travel/Business/WEX
- Additional strand - core maths, EPQ, UoE
- Super curricular 2 periods a week
- RHPD
- Supervised Study/Ghost lessons



	MONDAY	TUESDAY	WEDNESDAY	THURSDAY	FRIDAY
8.45 – 9.10	ASSEMBLY	REGISTRATION (Y12)	REGISTRATION (Y13)	REGISTRATION (Y12&13)	MENTORING
PERIOD 1 9.10 – 10.00	SUPER-CURRICULAR	HOME STUDY	STUDY PERIOD	HOME STUDY	MEDIA STUDIES
PERIOD 2 10.00 – 10.50			ENGLISH LANGUAGE	ENGLISH LANGUAGE	
	BREAK	BREAK	BREAK	BREAK	BREAK
PERIOD 3 11.10 – 12.00	MEDIA STUDIES	HOME STUDY	HOME STUDY	MUSIC TECHNOLOGY	MUSIC TECHNOLOGY
PERIOD 4 12.00 – 12.50	ENGLISH LANGUAGE				
	LUNCH	LUNCH	LUNCH	LUNCH	LUNCH
PERIOD 5 13.25 – 14.15	MUSIC TECHNOLOGY	MEDIA STUDIES	EPQ	STUDY PERIOD	ENGLISH LANGUAGE
PERIOD 6 14.15 – 15.05	HOME STUDY		PERSONAL DEVELOPMENT	EPQ	

Semi-structured Independence

- Home study after settling-in period.
- Granted with conditions

	MONDAY	TUESDAY	WEDNESDAY	THURSDAY	FRIDAY
8.45 – 9.10	ASSEMBLY	REGISTRATION (Y12)	REGISTRATION (Y13)	REGISTRATION (Y12&13)	MENTORING
PERIOD 1 9.10 – 10.00	SUPER-CURRICULAR	HOME STUDY	STUDY PERIOD	HOME STUDY	MEDIA STUDIES
PERIOD 2 10.00 – 10.50			ENGLISH LANGUAGE	ENGLISH LANGUAGE	
	BREAK	BREAK	BREAK	BREAK	BREAK
PERIOD 3 11.10 – 12.00	MEDIA STUDIES	HOME STUDY	HOME STUDY	MUSIC TECHNOLOGY	MUSIC TECHNOLOGY
PERIOD 4 12.00 – 12.50	ENGLISH LANGUAGE				
	LUNCH	LUNCH	LUNCH	LUNCH	LUNCH
PERIOD 5 13.25 – 14.15	MUSIC TECHNOLOGY	MEDIA STUDIES	EPQ	STUDY PERIOD	ENGLISH LANGUAGE
PERIOD 6 14.15 – 15.05	HOME STUDY		PERSONAL DEVELOPMENT	EPQ	

Broad curriculum

- All students study personal development, super-curricular and an additional strand.

	MONDAY	TUESDAY	WEDNESDAY	THURSDAY	FRIDAY
8.45 – 9.10	ASSEMBLY	REGISTRATION (Y12)	REGISTRATION (Y13)	REGISTRATION (Y12&13)	MENTORING
PERIOD 1 9.10 – 10.00	SUPER-CURRICULAR	HOME STUDY	STUDY PERIOD	HOME STUDY	MEDIA STUDIES
PERIOD 2 10.00 – 10.50			ENGLISH LANGUAGE	ENGLISH LANGUAGE	
	BREAK	BREAK	BREAK	BREAK	BREAK
PERIOD 3 11.10 – 12.00	MEDIA STUDIES	HOME STUDY	HOME STUDY	MUSIC TECHNOLOGY	MUSIC TECHNOLOGY
PERIOD 4 12.00 – 12.50	ENGLISH LANGUAGE				
	LUNCH	LUNCH	LUNCH	LUNCH	LUNCH
PERIOD 5 13.25 – 14.15	MUSIC TECHNOLOGY	MEDIA STUDIES	EPQ	STUDY PERIOD	ENGLISH LANGUAGE
PERIOD 6 14.15 – 15.05	HOME STUDY		PERSONAL DEVELOPMENT	EPQ	

Isn't it just like school, though?

If you ask our students, they'll say no.

Mythbusting:

- There is no Sixth Form uniform
- There is home study
- There are dedicated Sixth Form spaces and events

We are a part of our school (and we like that!) but the experience is different.

Transition Support - Mrs Tucker

- Welcome lunch
- Team Building day
- External taster day
- Buddies within classes if struggling
- No study leave for first HT.
- Tutorials (small group and 1-1)
- Progress Coaches and Sixth Form Managers



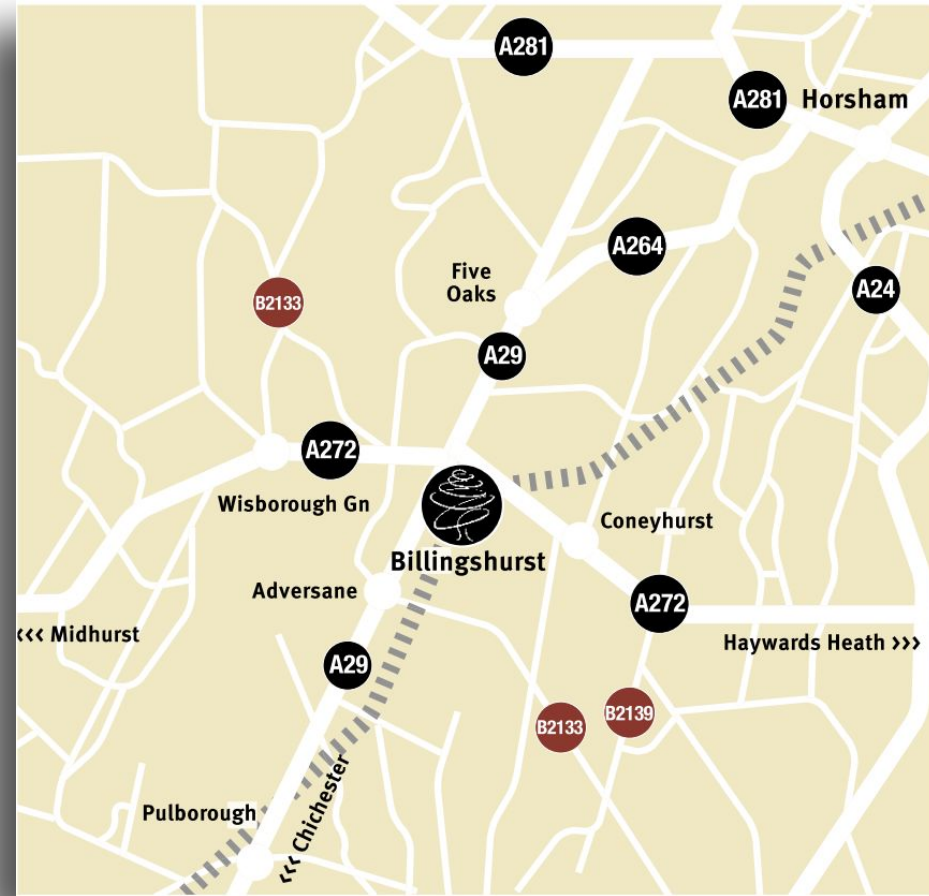
Getting here

Billingshurst

10 minutes on the train from Horsham. 20 from Crawley

Sixth Form Car Park (free)


Bus service from Horsham
(30 minutes from THS)



Getting here

A significant number of our students travel to our very popular School and Sixth Form.

Get in touch with our Sixth Form team to discuss support or get advice.



Billingshurst to Horsham

Journey information from Billingshurst to Horsham

How long is the average journey duration from Billingshurst to Horsham?	0 hours 10 minutes
How long is the fastest journey duration from Billingshurst to Horsham?	0 hours 10 minutes
When is the first train from Billingshurst to Horsham?	06:09
When is the last train from Billingshurst to Horsham?	23:18
How many services run for Billingshurst to Horsham today?	34

Super-curricular

- All year 12s undertake 2 periods of super-curricular a fortnight



- E.g. helping out in a lower school lesson or tutoring younger years



- 30 Year 12s and some teachers travel to **Kenya** each year, funded by their individual fundraising as well as the **sponsored walk** each year which raises ~£20,000

Classrooms for kenya

- Having been the school's charity for almost 20 years, we have **built** approximately 100 classrooms



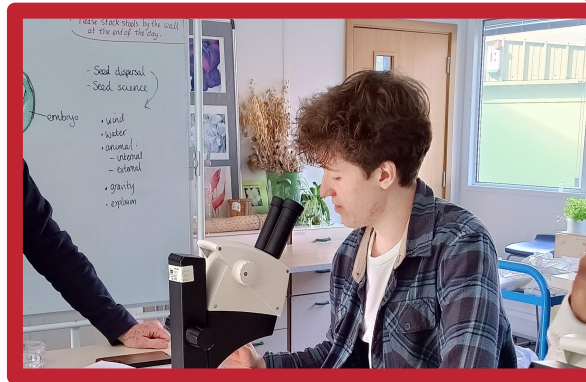
We have an amazing team of staff who enjoy supporting sixth formers through Silver Dofe



Dofe and trips



Trips to Cern,
Iceland,
Hampton Court,
Parliament,
Thorpe park , to
name just a few!



Overview

Y12

- Start, teambuilding, 4 week assessments, enrichment day, University trip, work experience, Y13 entrance exams, UCAS launch, Kenya, DofE, Model UN.

Y13

- Teambuilding, mocks, enrichment day, UCAS deadlines, study support, finance workshops, University of Surrey talks (prep for Uni) and Exams.

Biggest challenge

Study periods and independence

- KS4 is harder than KS5. Full days are still expected. Homework is expected, despite the study periods.
- Exam boards recommend 4-5 hours per subject, per week of independent study. Only some of this can be done at school.

Tips

- Start early with good habits. Use the effective revision strategies you already have. Revisit class notes, complete pre-reading, listen to podcasts.
- Timetable your study periods. E.g. allocate them to a subject.
- Engage with ALL aspects of the curriculum for support.

- Ongoing 1:1 support from a form tutor
- A weekly UCAS 'drop in' service offering general application advice and help with writing a personal statement
- A dedicated Oxbridge advisor
- A dedicated Medicine/Dentistry/Veterinary advisor
- Practice interviews
- Support with registering for admissions tests
- A medicine society

Aberystwyth University	BA Creative Writing and Modern Languages	Plymouth Marjon University	Physical Education in Secondary Education
Bangor University	Geography	Royal Holloway, University of London	Computer Science
Bath Spa University	Cyber Security		
Birmingham City University	Sports Therapy	Sheffield Hallam University	Physiotherapy
Bournemouth University	Multimedia Sports Journalism	The University of Edinburgh	Neuroscience
Brighton and Sussex Medical School	Medicine	University for the Creative Arts	Comic & Concept Art
Bristol, UWE	Diagnostic Radiography	University of Bath	Biomedical Sciences
Bristol, UWE	Occupational Therapy	University of Bath	Mathematics
Buckinghamshire New University	Architectural Design and Technology	University of Bath	Sociology and Social Policy
	Psychology		Mechanical with Automotive Engineering
Canterbury Christ Church University	History		
Cardiff University	Business Management (International Management)	University of Bath	Psychology
Cardiff University	Psychology	University of Bath	Accounting and Finance
Durham University	English Literature	University of Birmingham	Nursing (Child)
Durham University	Automotive Engineering (with Placement)	University of Brighton	Marketing Management
Harper Adams University	War Studies	University of Brighton	Sport Coaching
		University of Brighton	Primary Education 3-7 with QTS
King's College London, University of London	Politics, Philosophy and Law	University of Brighton	Geography
King's College London, University of London		University of Brighton	Games Art & Design
King's College London, University of London	Biomedical Science	University of Bristol	Veterinary Science
Kingston University		University of Bristol	Law
Loughborough University	Pharmacology	University of Bristol	Zoology
	Sport Science, Coaching and Physical Education	University of Bristol	Criminology
Loughborough University	Geography and Management	University of Bristol	Accounting and Finance
Oxford Brookes University	Motorsport Engineering	University of Bristol	Neuroscience
		University of Cambridge	Medicine

These
 university
 places are
 just some
 of the
 university
 places
 offered
 this year

Next steps

- Results Day
 - We will be on hand. Email sixthformoffice@theweald.org.uk or call 01403 787283
- **Complete online enrolment**
- Registration Day (4/9/25)
 - You can change courses and meet your tutor who will advise you.
- Monday 8th Sept - first day of term