

# 05 WEST SUSSEX KNEPP CASTLE ESTATE

► Distance: 9½ miles/15.3km ► Time: 4½ hours ► Grade: Moderate

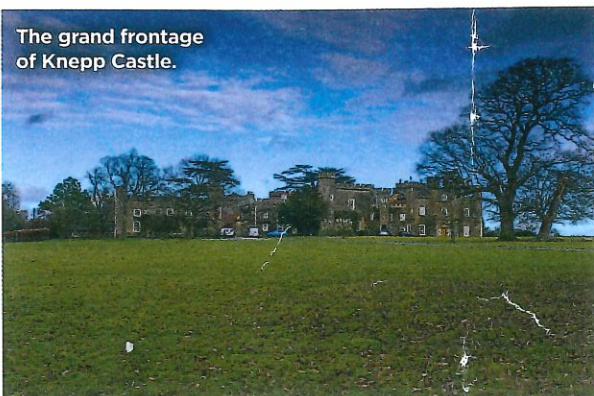


PHOTO: HANNA LINDON



## CHOSEN BY... HANNA LINDON

Back in 2001, the aristocratic owners of Knepp Castle began an ambitious rewilding project across their 3500-acre estate. Free-ranging herbivores such as longhorn cattle and Tamworth pigs were introduced to the land with the aim of replicating a pre-human environment. The result is an intriguing wilderness of scrubland, meandering streams and wildlife-rich woods – walking here is like stepping ten thousand years back in time. This route combines a ramble through the rewilding area with a return along the peaceful River Adur. It finishes

in the groomed deer park surrounding Knepp Castle, where you can divert to see a medieval ruin once used as a hunting lodge by King John I.

## 1 Start

Walk west out of village, taking bridleyway on L past windmill. Turn R at first lane, then L through gate. On reaching brick hut, follow bridleyway L past treetop viewing platform. L at first footpath crossroads then leave track R taking bridleyway through gate. After bridge, turn L and join track past farm buildings with lake on L. Then at T-junction turn L. When track bears R, follow bridleyway straight – this merges into lane and comes out on Worthing Rd.

## PLAN YOUR WALK



## ROUTE

**Start/parking** Layby on School Lane, Shipley, RH13 8PL, grid ref TQ142220  
**Is it for me?** River banks, tracks and narrow lanes, mostly flat. Can get muddy when wet  
**Stiles** 10

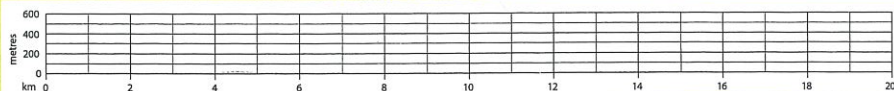
## PLANNING:

**Nearest town** Horsham  
**Refreshments** The Crown Inn in Dial Post  
**Public toilets** None  
**Public transport** Bus 74 Horsham-Storrington stops irregularly at Shipley. There are trains from Horsham to London and other destinations.  
**Maps** OS Explorer OL34, OL10 & OL11 Landranger 198

## 2 2¾ miles/4.25km

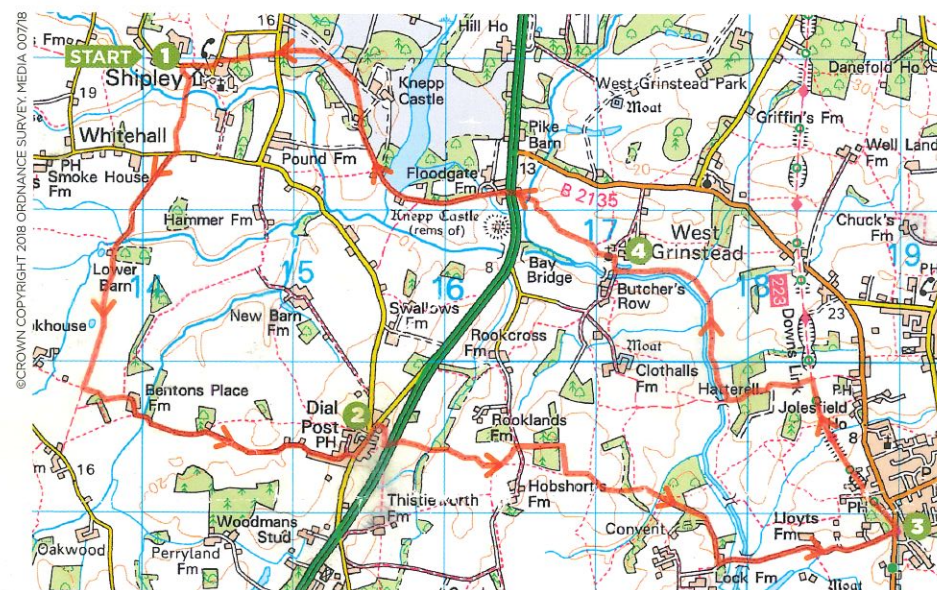
Turn L. At pub, bear R through beer garden to join footpath. Cross stile and turn L, then quickly R to cross A24. Follow footpath over two stiles, ➔

## GRADIENT PROFILE



# 05 WEST SUSSEX KNEPP CASTLE ESTATE

► OS Explorer map OL34, OL10 & OL11 ► Buy maps at: [ordnancesurvey.co.uk/shop](http://ordnancesurvey.co.uk/shop)



## DON'T MISS...



**The 12th-century ruins of medieval Knepp Castle, built by William the Conqueror's right-hand man William de Braose.**

bearing slightly R at footpath crossways. Cross track and continue along field boundary. Bear R at first footpath sign and L at second signpost. When track turns R, head straight on through field. Continue through wood to reach track. At first big house, turn L and follow footpath

through archway under pike house. Join bridleyway along narrow lane and follow this to main road.

## 3 5¼ miles/8.5km

Turn L along road then L again to join Downs Link path. Take first bridleyway on L after 1km. Bear L and then R after brook to follow bridleyway around field edge. At river, turn R and walk along riverside bank. Cross four stiles, then turn R towards church. Bear L through graveyard to join footpath that leaves church via metal gate.

## 4 7½ miles/12.1km

Turn R and quickly L, following field lane to footpath

sign. Here, turn R. Cross A24 and walk down drive through gate. After lodge house, leave lane L and walk across parkland. Turn L at main drive and continue for 100m, then L again at footpath sign. Cross lane and follow driveway through two gates, bearing R just before houses. Emerge on Red Lane and turn L then soon R back to parking spot. **CW**

## VIEW THE WALK ON OS MAPS ONLINE:

[lfto.com/cwroutes](http://lfto.com/cwroutes)

IN ASSOCIATION WITH



OS MAPS



Ordnance Survey

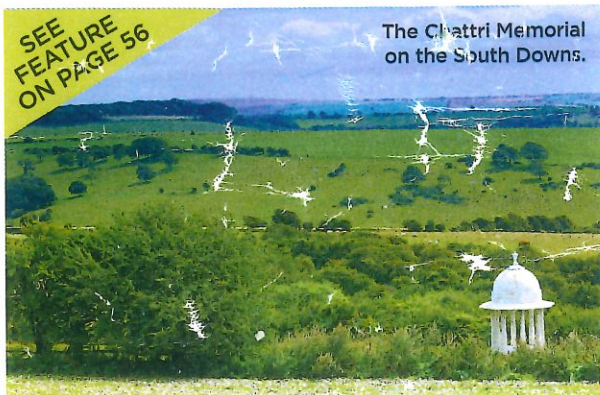


# 05 WEST SUSSEX CHATTRI MEMORIAL

Distance: 8½ miles/13.8km Time: 4½ hours Grade: Moderate

SOUTH EAST

SEE  
FEATURE  
ON PAGE 56



The Chattri Memorial  
on the South Downs.

PHOTO: TOM BAILEY



## CHOSEN BY... NICK HALLISSEY

The Chattri honours the 53 Sikh and Hindu soldiers who died after being shipped back to Brighton with injuries sustained in the battlefields of the First World War, and whose bodies were burned in a funeral pyre on a hillside on the South Downs. The walk to reach this sombre but beautiful monument is a real treat, also taking in the famous Jack and Jill windmills and the little-frequented valley of Standean Bottom.

## 1 Start

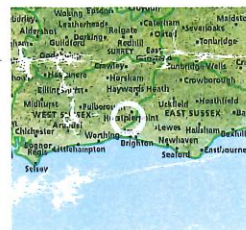
Emerge from car park entrance and turn L on farm track, passing R of two windmills. Where track splits,

take R fork through gate and descend towards farm. Pass through farm then, at crossroads of paths, continue ahead with signpost for Chattri. Dyecombe golf course now appears R. Continue through combe at top edge of golf course and over brow of hill to reach junction of paths.

## 2 1 mile/1.6km

Turn L towards line of trees on field boundary. At boundary, turn R through gate and continue on track with hedges L and R. At end, go through gate and turn L. Continue on R edge of field with hedge R. Halfway across field turn R through gate (sign for Chattri) following path across ridge line ahead (Sussex Border Path). At

## PLAN YOUR WALK



## ROUTE

**Start/parking** Free car park at Jack and Jill windmills, grid ref TQ302133

**Is it for me?** Easy paths, mostly along field boundaries/waymarked trails. One longish stretch on quiet lane. Careful navigation needed at Lower Standean

**Stiles** None

## PLANNING

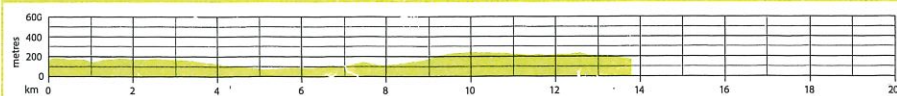
**Nearest town** Brighton.  
**Refreshments** None, but frequent ice cream van at Ditchling Beacon  
**Public toilets** None  
**Public transport** None  
**Maps** OS Explorer OL11, Landranger 198

crest of ridge, go through gate and turn L down bank. Through gate L to enter Chattri site.

## 3 2 miles/3.1km

Leave Chattri by same gate and follow southward path

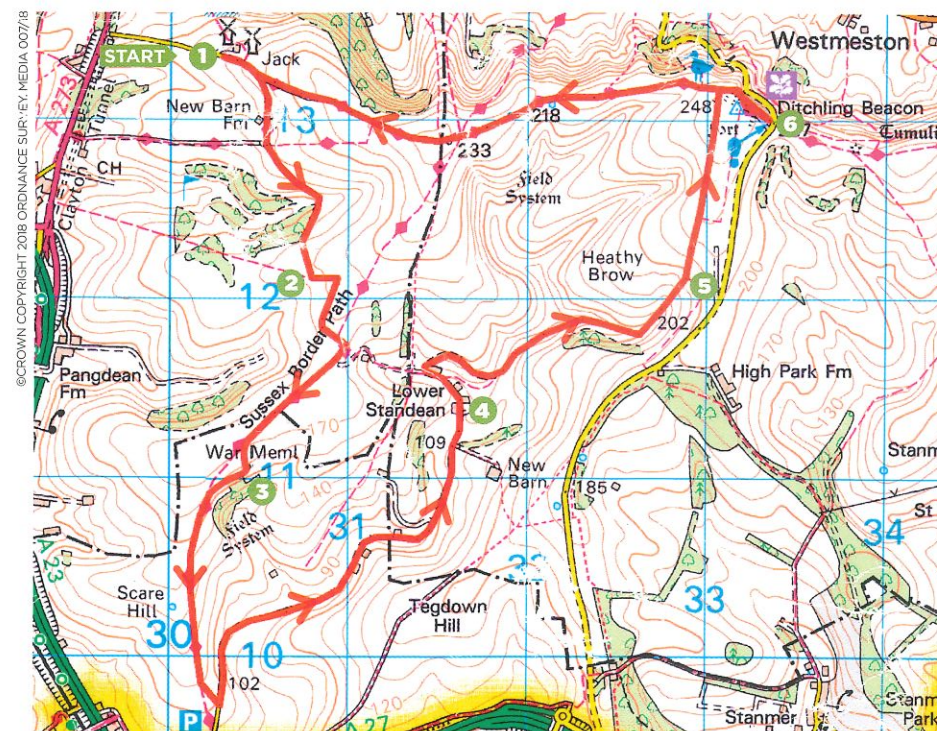
## GRADIENT PROFILE



# 05 WEST SUSSEX CHATTRI MEMORIAL

OS Explorer map OL11 Buy maps at: [ordnancesurvey.co.uk/shop](http://ordnancesurvey.co.uk/shop)

SOUTH EAST



climbing diagonally back to the ridgeline. Rejoin path and continue over Ewebottom Hill. Take first footpath branching L and descend to gate. Go through gate to join lane. Turn L and follow lane through valley for 1½ miles, passing Alpha Cottage and Beta Cottage and eventually arriving at hamlet of Lower Standean.

## 4 4½ miles/7km

Pass Standean Farm. Continue past grey barn, then take branching track R. Follow track around flank of hillside

(permissive access), through gate and descend into North Bottom. Descend to fenceline and locate gate with prominent footpath sign. Go through gate, turn L and follow path leading uphill into combe. Climb steadily, passing through a gate, to top left edge of combe.

## 5 5½ miles/9km

Enter enclosed farm track heading north. Continue over brow of hill, descending to pass through gate and join South Downs Way (SDW). Detour R to summit of Ditchling Beacon.

## 6 6½ miles/10.4km

Retrace steps along SDW. Continue on trail along edge of downs, through series of gates. Eventually reach an enclosed track which descends to gate and joins outbound path. Pass windmills R to finish. **CW**

## VIEW THE WALK ON OS MAPS ONLINE:

[lfto.com/cwroutes](http://lfto.com/cwroutes)

IN ASSOCIATION WITH



© Country Walking November 2018

DATE WALKED

TIME TAKEN

YOUR RATING



# 05 WEST SUSSEX DEVIL'S DYKE

► Distance: 10½ miles/16.8km ► Time: 5 hours ► Grade: Moderate

SOUTH EAST

SOUTH EAST

# 05 WEST SUSSEX DEVIL'S DYKE

► OS Explorer map 122 ► Buy maps at: [ordnancesurvey.co.uk/shop](http://ordnancesurvey.co.uk/shop)

SEE  
FEATURE  
ON PAGE 70

Looking into the Devil's  
Dyke early in the walk.

PHOTO: FIONA BARLTROP

## PLAN YOUR WALK



## ROUTE

**Start/parking** Parking area opposite Saddlescombe Farm southern entrance (or by railings at northern entrance), BN45 7DE, grid ref TQ271114. Alternative nearby car park or one at top of Devil's Dyke

**Is it for me?** Good downland paths and tracks, much of route along ridge-top South Downs Way

**Stiles** 2

## PLANNING

**Nearest towns** Brighton, Hove & Shoreham

**Refreshments** Cafés at Saddlescombe Farm and Truleigh Hill YH; Devil's Dyke pub/restaurant, 01273 857256

**Public toilets** Devil's Dyke & Saddlescombe Farm

**Public transport** No.77 bus from Brighton (seasonal service)

**Maps** OS Explorer 122; Landranger 198

passengers across the 300m wide valley – a great attraction for Victorian day-trippers. There was also a funicular railway at one time linking the village of Poynings with the top of the Dyke. This walk takes you up beside the Dyke, then along a fine section of the South Downs Way to Beeding Hill and back with far reaching views across the Weald to the north and along the coast to the south.

## 1 Start

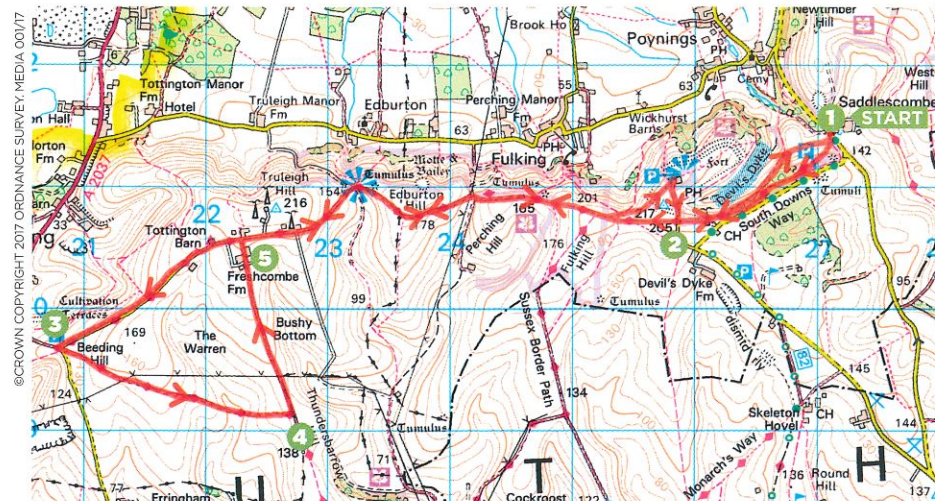
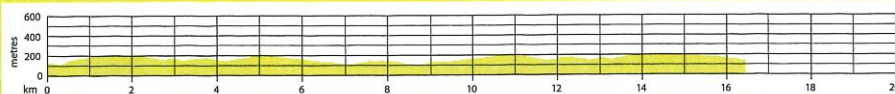
The walk starts from the old farmstead of Saddlescombe, acquired by the NT in 1995. It's well worth a look inside the large barn where there are information panels about the history of the farm, once



## CHOSEN BY... FIONA BARLTROP

National Trust owned Devil's Dyke is a steep V-shaped dry valley, one of the South Downs' beauty spots and duly popular. Local legend has it that the valley is a trench which the devil dug in an attempt to flood the churches of the Sussex Weald. The digging disturbed an old woman who lit a candle, which the devil took to be the approach of morning, so he fled leaving his work unfinished. As well as the Iron Age hill-fort ramparts, there are other remains from the past to be seen, notably the concrete foundations of Britain's first cable car which was built here in 1894, taking

## GRADIENT PROFILE



home to the Knights Templar. Also worth seeing is the donkey wheel, a huge wooden wheel, once powered by a donkey or small horse and used for drawing water from the well. Once you've had a wander round, re-cross road (assuming you parked in car park opposite southern entrance to farm). Opposite northern entrance to farm (from car park turn L alongside road a few yards) the path you want is not the public footpath, but the permissive path, indicated by a post with a dark pink arrow – NT waymark). Go down some steps, cross stile and bear L and then R. Follow path across field and cross another stile into access land. Ignore arrow pointing down R, and continue ahead up grassy slope with Devil's

Dyke below on R. Before long you join bridleway that comes up from R. Carry on up, ignoring first L fork. Join South Downs Way (SDW) and continue up to road.

## 2 1 mile/1.5km

Cross road and maintain direction across grass. Ahead in distance are the masts on Truleigh Hill to which you are headed; over to the R you can see the hill-fort ramparts and to your L is the coastline. Off the coast is the Rampion offshore wind farm, the south coast's first, the 116 turbines installed in 2017. Follow the undulating SDW to Truleigh Hill, where you'll pass masts and then descend past the YH on the R down beside the access road to Beeding Hill car park.

**3 4½ miles/7km** Turn sharp L and follow bridleway (Monarch's Way) for 2km.

**4 5½ miles/9km** At the T-junction turn L back north to SDW.

**5 6½ miles/10.5km** Turn R re-tracing steps on SDW. Approaching Devil's Dyke, bear L to head directly to car park, pub and viewpoint. R alongside road to re-join SDW and L down it to start. **CW**

## VIEW THE WALK ON OS MAPS ONLINE:

[lfto.com/cwroutes](http://lfto.com/cwroutes)

IN ASSOCIATION WITH



DATE WALKED

TIME TAKEN

YOUR RATING