

What are the seven characteristics of life?

M
R
S
G
R
E
N

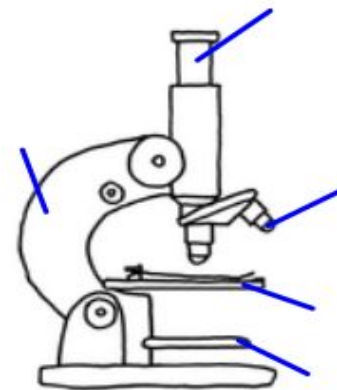
What are the three types of pathogen?

Give three safety rules for setting up an agar plate for growing microbes:

Name the process by which substances like oxygen and sugar get into a cell:

Describe how the particles of oxygen move:

Label the parts on this microscope:



7.3 Life on Earth

Cells can be organised like this....



What is a specialised cell?

What do these animal special cells do and how are they adapted to their job?

What do these plant special cells do and how are they adapted to do their job?

Label the cell diagrams below:

Xylem vessels:

Nerve cell:

Root hair cells:

Red blood cell:

Palisade (leaf) cell:

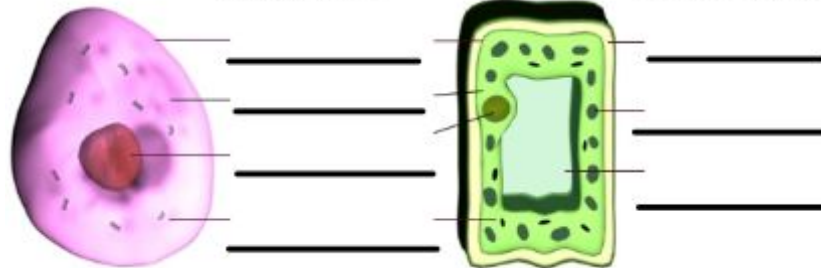
Ciliated epithelial cell:

Animal Cell

Plant Cell

Plant and Animal Cells share these common features

Plant Cells contain these extra features



What are the seven characteristics of life?

Movement
Respiration
Sensitivity

Growth
Reproduction
Excretion
Nutrition

What are the three types of pathogen?

Bacteria

Virus

Fungus

Give three safety rules for setting up an agar plate for growing microbes:

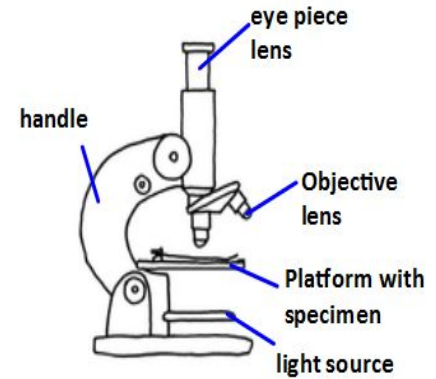
1. Do not sellotape the lid round the whole edge
2. Store below body temperature
3. Open the lid away from you as you set it up.

Name the process by which substances like oxygen and glucose get into a cell:

Diffusion

Describe how the particles of oxygen move:
from an area of high concentration to low

Label the parts on this microscope:



7. 3 Life on Earth

Cells can be organised like this....

cells → tissues → organs → organ systems

What is a specialised cell?

A cell that is designed to do a particular job

What do these plant special cells do and how are they adapted to do their job?

Xylem vessels: It carries water up the stem. It is hollow with strong walls

Root hair cells: It absorbs water from the soil into the roots. It has a large surface area to collect the water.

Palisade (leaf) cell: It is where plants make glucose by photosynthesis. It is packed with chloroplasts where photosynthesis happens.

What do these animal special cells do and how are they adapted to their job?

Nerve cell: It carries impulses to and from the brain. It is very long

Red blood cell: It carries blood around the body. It has no nucleus so there is more space. It has haemoglobin

Ciliated epithelial cell: It clears away dirt from your lungs. It has tiny hairs that pulse and move the dirt.

Label the cell diagrams below:

