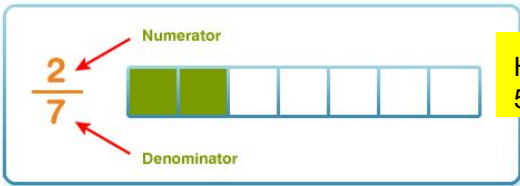
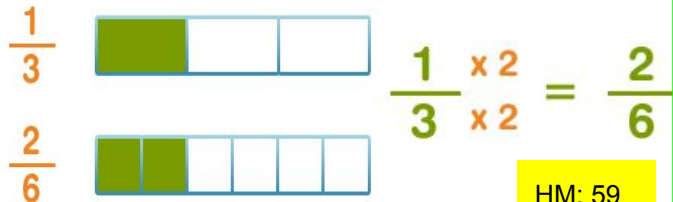


A fraction is a part of a whole. There are two numbers to every fraction:



HM: 57&58

Equivalent fractions look different but are exactly the same.



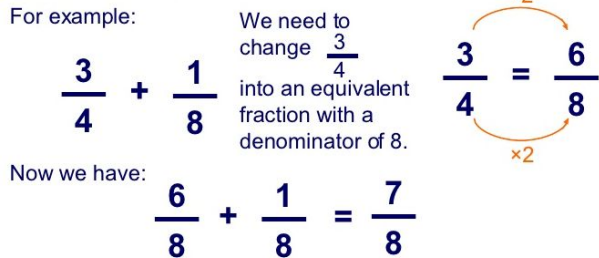
HM: 59

You can make equivalent fractions by multiplying or dividing the numerator and denominator by the same number.

Adding and Subtracting Fractions

HM: 65-66

We can use **equivalent** fractions to add fractions that do not have the same **denominator**.



Multiplying and Dividing Fractions

$$\frac{2}{5} \times \frac{7}{4} = \frac{2 \times 7}{5 \times 4} = \frac{14}{20}$$

To divide fractions multiply by the reciprocal

$$\frac{3}{4} \div \frac{4}{7} = \frac{3}{4} \times \frac{7}{4} = \frac{21}{16}$$

HM 68-70

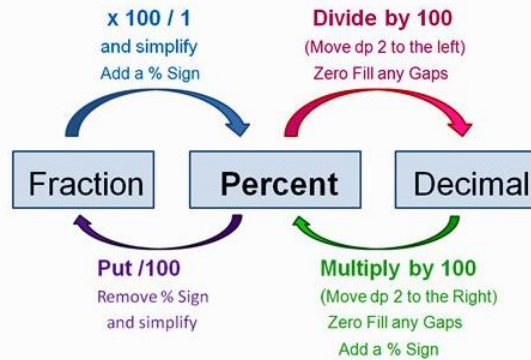
Year 7 - Fractions / Decimals / Percentages

Percentages

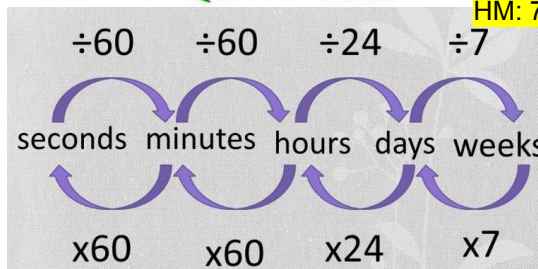
HM 84

- To find 10% → Divide by 10 → $320 \div 10 = 32$
- To find 1% → Divide by 100 → $320 \div 100 = 3.2$
- To find 50% → Divide by 2 → $320 \div 2 = 160$
- To find 20% → Double 10% → $32 \times 2 = 64$
- To find 5% → Half 10% → $32 \div 2 = 16$
- To find 2.5% → Half 5% → $16 \div 2 = 8$

HM: 73-76



HM: 709-711



Definitions / Key terms

| | | |
|--------------------------------|---|---------------------------------------|
| Denominator | How many equal parts something is shared between | $\frac{2}{3}$ 3 is the denominator |
| Numerator | How many equal parts that we have | $\frac{2}{3}$ 2 is the numerator |
| Percentage | A fraction out of 100 | $\frac{34}{100} = 34\%$ |
| Simplify | Write a fraction using the lowest denominator | $\frac{4}{10} = \frac{2}{5}$ |
| Mixed Fraction | An amount of whole numbers and a fraction | $1\frac{2}{3}$ |
| Improper Fractions (Top Heavy) | A fraction where the numerator is larger than the denominator | $\frac{5}{3}$ |